



TEXAS A&M UNIVERSITY - SAN ANTONIO

# Fact Book 2016



TEXAS A&M UNIVERSITY  
**SAN ANTONIO**

**Fact Book 2016**

Office of Institutional Research  
Office of the Provost  
One University Way  
San Antonio, TX 78224



**Table of Contents**

**History..... 6**

**Mission..... 6**

**University Accreditation..... 6**

**University Profile, Fall 2016 ..... 7**

**Texas A&M University System Board of Regents, 2016 - 2017..... 8**

**A&M-SA Executive Team, 2016 - 2017..... 9**

**Faculty Senate, 2016 - 2017 ..... 9**

**Staff Council, 2016 - 2017 ..... 9**

**Student Government Association, 2016 - 2017 ..... 10**

**Organizational Chart..... 11**

**Degree Programs, 2016 - 2017 ..... 12**

**Admissions ..... 16**

Admission Data by Level, Fall 2012 - 2016 ..... 16

First-Time-In-College Admission, Fall 2016 ..... 16

Fall 2016 Admission by College and Level..... 17

**Enrollment ..... 18**

Enrollment by Level Fall 2009 - 2016..... 18

Enrollment by Coordinating Board Classification Fall 2009 - 2016..... 18

Annual Enrollment by Level ..... 19

Annual Unduplicated Enrollment ..... 19

FTE Enrollment, Fall 2009 - 2016..... 20

Detailed Composition of Student Body, Fall 2012 - 2016 ..... 21

Detailed Composition of Undergraduate Student Body, Fall 2012 - 2016 ..... 22

Detailed Composition of Graduate Student Body, Fall 2012 - 2016..... 23

Enrollment by Major, Fall 2009 - 2016 ..... 24

Enrollment by Texas Residential County, Fall 2012 - 2016 ..... 28

Enrollment by Major, Fall 2009 - 2016 (con't.) ..... 28

Enrollment by Age, Fall 2012 - 2016 ..... 29

Enrollment by Age and Level, Fall 2016..... 29

**Credit Hours..... 30**

Semester Credit Hours, Fall 2009 - 2016 ..... 30

Semester Credit Hours by College & Level, Fall 2009 - 2016..... 31

Semester Credit Hours by College, Department, Discipline & Level, Fall 2016 ..... 33

Semester Credit Hours by College, Department, Major, & Level, Fall 2016..... 35

Student/Faculty Ratio, Fall 2012 - 2016 ..... 36

Class & Semester Credit Hour Load, Fall 2010 - 2016 ..... 37

Annual SCH by Level, 2009 - 2016..... 38

SCH Generated by Instruction Mode, Fall 2010 - 2016..... 39

SCH Generated by College, Department, Instruction Mode, & Level, Fall 2016 ..... 40

**Degrees Awarded ..... 42**

Annual Degrees Conferred by Level..... 42

Annual Degrees Conferred by Level & Gender ..... 42

Annual Degrees Conferred by Level & Ethnicity..... 43

Annual Degrees Conferred by Level & Race ..... 44

Annual Degrees Conferred by College, Department, & Level..... 45

Degrees Conferred by College, Department, Major, & Level ..... 47

<b>Faculty.....</b>	<b>52</b>
A&M-SA Faculty, Fall 2012 - 2016.....	52
Faculty FTE (Full-Time Equivalent), Fall 2012 - 2016.....	52
Faculty Headcount by Rank, Fall 2012 - 2016.....	54
Detailed Composition of Faculty, Fall 2012- 2016.....	55
Detailed Composition of Full-Time Faculty, Fall 2016.....	57
Detailed Composition of Part-Time Faculty, Fall 2016.....	58
<b>Staff .....</b>	<b>59</b>
Detailed Composition of Staff, Fall 2012 - 2016.....	59

# General Information

## **History**

Established as the Texas A&M University-Kingsville System Center-San Antonio in January 2000, A&M-SA was created as a stand-alone university on May 23, 2009. A&M-SA meets the criteria for a Four-Year 5 SREB institution and offers 37 programs leading to baccalaureate and master's degrees. For more information, please visit [www.tamusa.edu](http://www.tamusa.edu).

## **Mission**

Texas A&M University-San Antonio faculty and staff prepare and empower students through innovative and challenging academic and co-curricular programs that contribute to and enrich the economic and social development of the community and region. A solid foundation for success is established through dynamic teaching, scholarship, research, and public service that inspire graduates to lifelong learning and responsible global citizenship.

## **University Accreditation**

Texas A&M University-San Antonio is accredited by the Southern Association of Colleges and Schools Commission on Colleges to award baccalaureate and master's degrees. Contact the Commission on Colleges at 1866 Southern Lane, Decatur, Georgia 30033-4097 or call (404) 679-4500 for questions about the accreditation of Texas A&M University-San Antonio.

## University Profile, Fall 2016

<b>Established</b>	2009
<b>President</b>	Dr. Cynthia Teniente Matson
<b>Enrollment</b>	5,474 (4,492.7 FTE*)
<b>Faculty</b>	284 (198.5 FTE)
<b>Staff</b>	245
<b>Colleges</b>	College of Arts & Sciences College of Business College of Education & Human Development
<b>Degree Programs</b>	37
<b>Annual Degrees Awarded</b>	1,319
<b>Budget</b>	\$61,174,026
<b>Endowment</b>	\$1,496,035
<b>Annual Tuition &amp; Fees</b>	\$6,562**

\*FTE student: 12 SCH per undergraduate, 9 SCH per graduate

\*\*Based on two semesters for a new full-time (12 SCH per semester) in-state undergraduate student



## Texas A&M University System Board of Regents, 2016 - 2017

### Officers FY2017

- Cliff Thomas, Chairman, Board of Regents
- Elaine Mendoza, Vice Chairman, Board of Regents

### Member(s) with term set to expire on February 1, 2017

- Elaine Mendoza
- Judy Morgan
- Cliff Thomas

### Member(s) with term set to expire February 1, 2019

- Anthony G. Buzbee
- Morris E. Foster
- Charles W. Schwartz

### Member(s) with term set to expire on February 1, 2021

- Phil Adams
- Robert L. Albritton
- William “Bill” Mahomes, Jr.

### Member(s) with term set to expire May 31, 2017

- Stephanie Y. Martinez

#### **Office of the Board of Regents**

Texas A&M University  
P.O. Box 15812  
College Station, TX 77841-5013

(979) 845-9600

Vickie Spillers, Executive Director  
[vickie@tamus.edu](mailto:vickie@tamus.edu)

Jackie Bell  
Assistant to the Board of Regents  
[jbelle@tamus.edu](mailto:jbelle@tamus.edu)

## **A&M-SA Executive Team, 2016 - 2017**

Cynthia Teniente Matson	President
Michael O'Brien	Provost and Vice President for Academic Affairs
William Spindle	Vice President for Business Affairs/CFO
Melissa Mahan	Vice President for Student Affairs
Richard Ortega	Vice President for Institutional Advancement

## **Faculty Senate, 2016 - 2017**

President:	Corinna Ross, Assistant Professor of Biology
Vice President/President Elect:	Amy Porter, Associate Professor of History
Secretary:	Bob Shelton, Assistant Professor of Chemistry
Parliamentarian:	Robin Kapavik, Associate Professor of Curriculum & Instruction
Senators:	Jack Ayres, Assistant Professor of English
	Kevin Barton, Associate Professional Track of Computer Information Systems
	Theresa Dorel, Assistant Professor of Special Education
	Daniel Glaser, Associate Professor of Management
	Carolyn Green, Professor of Computer Information Systems
	K.C. Kalmbach, Associate Professor of Psychology
	Deidre McDonald, Education Librarian
	Bryant Moore, Evening and Weekend Reference Librarian
	Kathleen Voges, Professor of Management
	Jennifer Wilson, Associate Professor of Reading

## **Staff Council, 2016 - 2017**

President:	Laura Sanchez, Purchasing Coordinator
Vice President:	Arturo Olague, Director, Recreational Sports
Treasurer:	Sharon Otholt, Financial Reporting Analyst
Secretary:	Kathleen Frank, Counselor
Parliamentarian:	Sherita Love, Director, Distance Learning and Instructional Design

## **Student Government Association, 2016 - 2017**

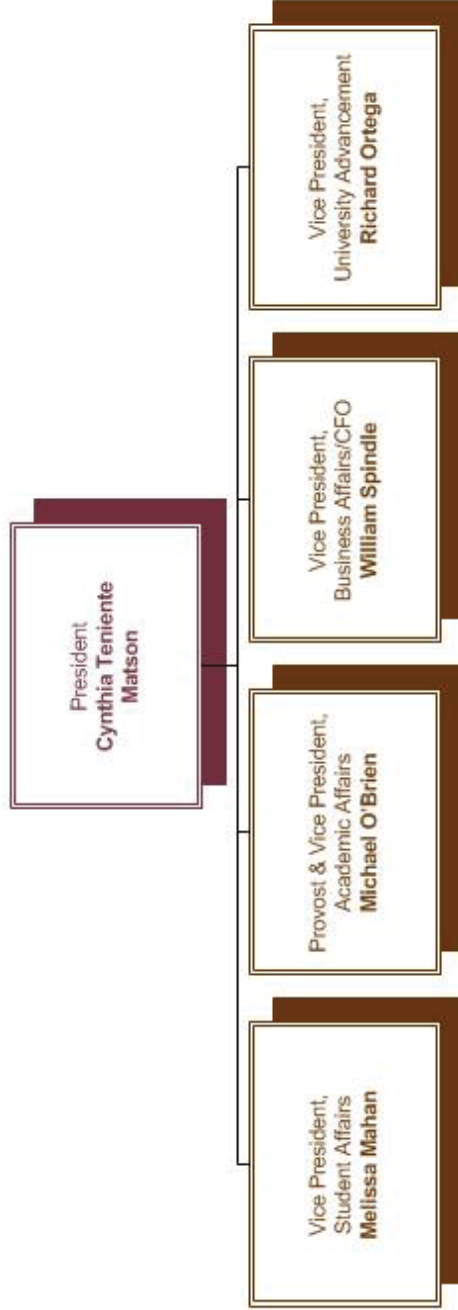
President:	Erick De Luna, Arts & Sciences
Vice President:	Brian Harrin, Arts & Sciences
Secretary:	Jan-Tanah Velasquez, Arts & Sciences
Student Concerns Liaison:	Mary Walker, Arts & Sciences
Military Relations:	Barbara Cooper, Arts & Sciences
Chief Justice:	William Manning, Arts & Sciences
Justices:	Miguel Castro, Arts & Sciences Martin Calderon, Arts & Sciences
PR Secretary:	Alexis Vega, Arts & Sciences
Treasurer:	Edward Garza, Business
Historian:	Caitlyn Balderas, Education & Human Development
Student Organization Liaison:	Felicia Martinez, Arts & Sciences
Senators:	Alexandra Anguiano, Education & Human Development Christopher Dodd, Arts & Sciences Juliet Dzakuma, Business David Flores, Arts & Sciences Carlos Manjarrez, Business Adrienne Reyes, Arts & Sciences Claudia Segovia, Arts & Sciences Joshua St. John, Education & Human Development

# Organizational Chart



TEXAS A&M UNIVERSITY  
**SAN ANTONIO**

Texas A&M University-San Anton  
Office of the President  
January 20, 2017



**Legend**

Maroon = University President  
Brown = Executive Team (ET)

## Degree Programs, 2016 - 2017<sup>1</sup>

Program	CIP Code	Degree Levels	
		Baccalaureate	Master's
<b>COLLEGE OF ARTS &amp; SCIENCES</b>			
DEPARTMENT OF ARTS & HUMANITIES			
COMMUNICATIONS	09.0100.00	BA (120 SCH) Start date: 07/30/2009	
SPANISH	16.0905.00	BA (120 SCH) Start date: 04/18/2012	
ENGLISH	23.0101.00	BA (120 SCH) Start date: 07/30/2009	MA MS Start date: 07/30/2009
HISTORY	54.0101.00	BA (120 SCH) Start date: 07/30/2009	
DEPARTMENT OF SCIENCE & MATHEMATICS			
BIOLOGY	26.0101.00	BA (120 SCH) BS (120 SCH) Start date: 07/30/2009	
MATHEMATICS	27.0101.00	BA (120 SCH) BS (120 SCH) Start date: 07/30/2009	
PSYCHOLOGY	42.0101.00	BA (120 SCH) BS (120 SCH) Start date: 07/30/2009	
DEPARTMENT OF SOCIAL SCIENCES			
APPLIED ARTS & SCIENCES	30.9999.40	BAAS (120 SCH) Start date: 07/30/2009	
CRIMINOLOGY 2018 Being phased out	45.0401.00	BS (120 SCH) Start date: 07/30/2009	
CRIMINOLOGY & CRIMINAL JUSTICE	45.0401.00	BS (120 SCH) Start date: 07/30/2009	
POLITICAL SCIENCE	45.1001.00	BA (120 SCH) Start date: 07/30/2009	
SOCIOLOGY	45.1101.00	BA (120 SCH) Start date: 07/30/2009	

<sup>1</sup> Source: The Texas Higher Education Coordinating Board University Program Inventory (<http://www.thecb.state.tx.us/apps/programinventory/>)

## Degree Programs, 2016-2017 (con't.)

Program	CIP Code	Degree Levels	
		Baccalaureate	Master's
<b>COLLEGE OF BUSINESS</b>			
DEPARTMENT OF ACCOUNTING & FINANCE			
ACCOUNTING	52.0301.00	BBA (120 SCH) Start date: 07/30/2009	MPA (30 SCH) Start date: 01/17/2011
FINANCE	52.0801.00	BBA (120 SCH) Start date: 07/30/2009	
DEPARTMENT OF COMPUTING & CYBER-SECURITY			
COMPUTER SCIENCE	11.0701.00	BS (120 SCH) Start date: 09/06/2011	
COMPUTER INFORMATION SYSTEMS	52.1201.00	BBA (120 SCH) Start date: 07/30/2009	
DEPARTMENT OF MANAGEMENT & MARKETING			
GENERAL BUSINESS ADMINISTRATION	52.0101.00	BBA (120 SCH) Start date: 07/30/2009	
BUSINESS ADMINISTRATION	52.0201.00		MBA (36 SCH) Start date: 07/30/2009
MANAGEMENT	52.0201.00	BBA (120 SCH) Start date: 07/30/2009	
INTERNATIONAL BUSINESS MANAGMENT	52.1101.00	BBA (120 SCH) Start date: 07/30/2009	
MARKETING	52.1401.00	BBA (120 SCH) Start date: 07/30/2009	

## Degree Programs, 2016-2017 (con't.)

Program	CIP Code	Degree Levels	
		Baccalaureate	Master's
<b>COLLEGE OF EDUCATION &amp; HUMAN DEVELOPMENT</b>			
DEPARTMENT OF COUNSELING, HEALTH & KINESIOLOGY			
COUNSELING & GUIDANCE	13.1101.00		MA (36 SCH) MS (36 SCH) Start date: 07/30/2009
KINESIOLOGY	31.0505.00	BS (120 SCH) Start date: 07/30/2009	MS Start date: 07/30/2009
MARRIAGE & FAMILY THERAPY	51.1505.00		MA (60 SCH) Start date: 08/15/2016
COMMUNITY HEALTH	51.2208.00	BS (120 SCH) Start date: 08/15/2016	
DEPARTMENT OF EDUCATOR & LEADERSHIP PREPARATION			
BILINGUAL EDUCATION	13.0201.00		MA (36 SCH) MS (36 SCH) Start date: 07/30/2009
EDUCATIONAL ADMINISTRATION	13.0401.00		MA (36 SCH) MS (36 SCH) Start date: 07/30/2009
SPECIAL EDUCATION	13.1001.00		MED (36 SCH) Start date: 07/30/2009
EARLY CHILDHOOD	13.1210.00		MED (36 SCH) Start date: 07/30/2009
READING SPECIALIZATION	13.1315.00		MS (36 SCH) Start date: 07/30/2009
CHILD DEVELOPMENT	19.0706.00	BS (120 SCH) Start date: 08/15/2017	
INTERDISCIPLINARY STUDIES	30.9999.01	BS (120 SCH) Start date: 07/30/2009	

# Student Information



## Admissions

### Admission Data by Level, Fall 2012 - 2016<sup>1</sup>

	2012		2013		2014		2015		2016	
	Count	Percent Conversion	Count	Percent Conversion	Count	Percent Conversion	Count	Percent Conversion	Count	Percent Conversion
<b>Undergraduate</b>										
Applied	1,929		2,189		2,222		2,712		7,896	
Accepted	1,632	85%	1,881	86%	1,678	76%	2,301	85%	4,066	51%
Enrolled	940	58%	1,061	56%	965	58%	1,122	49%	1,964	48%
<b>Post-Baccalaureate</b>										
Applied	59		61		67		70		73	
Accepted	58	98%	57	93%	52	78%	65	93%	65	89%
Enrolled	30	52%	19	33%	23	44%	32	49%	34	52%
<b>Graduate</b>										
Applied	794		750		736		748		832	
Accepted	644	81%	601	80%	550	75%	541	72%	520	63%
Enrolled	382	59%	314	52%	296	54%	272	50%	364	70%
<b>Total</b>										
Applied	2,046		2,307		2,341		2,847		8,861	
Accepted	1,720	84%	1,957	85%	1,753	75%	2,398	84%	4,644	53%
Enrolled	970	56%	1,080	55%	988	56%	1,154	48%	2,362	51%

### First-Time-In-College Admission, Fall 2016<sup>2</sup>

	Count	Percent Conversion
Applied	5,009	
Accepted	1,944	39%
Enrolled	502	26%

<sup>1</sup> Source: FactbookApplications.sql. In order to be consistent with reporting standards of both the Texas Higher Education Coordinating Board and the National Center for Data Statistics, these numbers include applications filed during the preceding summers and only count applications which were complete enough to consider for admission.

<sup>2</sup> Does not include freshmen transfers.

## Fall 2016 Admission by College and Level<sup>3</sup>

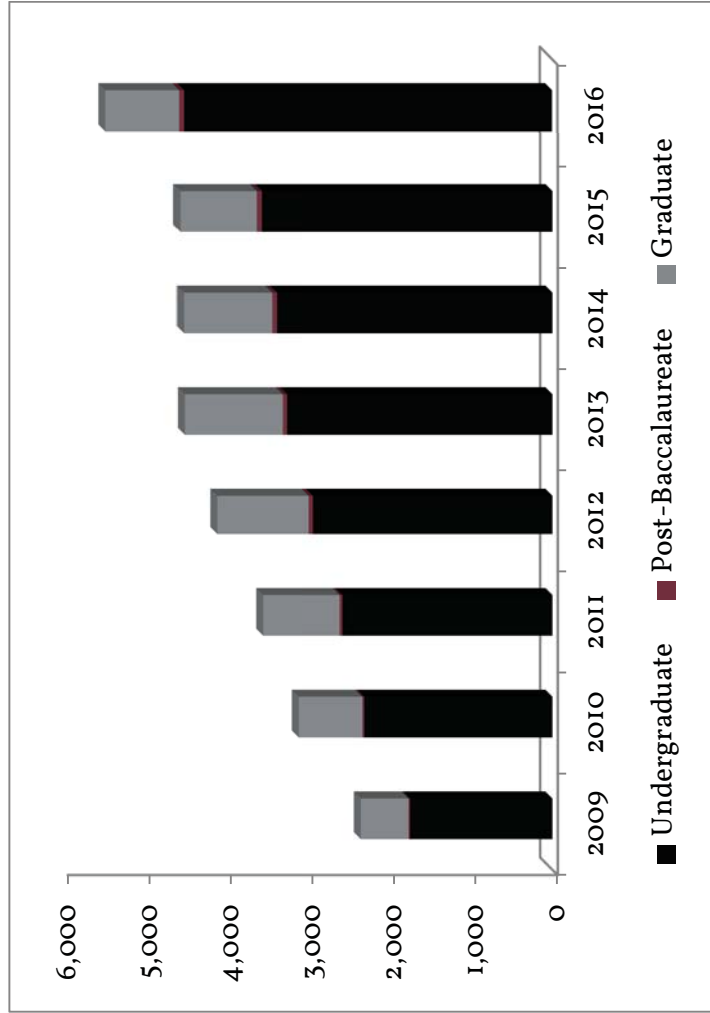
	Applied	Accepted	Enrolled
<b>Arts &amp; Sciences</b>	<b>4,201</b>	<b>2,147</b>	<b>1,015</b>
Arts & Humanities	574	311	189
Undergraduate	553	300	180
Post-Baccalaureate	4	3	3
Graduate	17	8	6
Science & Mathematics	2,159	1,071	424
Undergraduate	2,147	1,060	419
Post-Baccalaureate	12	11	5
Social Sciences	1,401	738	397
Undergraduate	1,389	727	393
Post-Baccalaureate	12	11	4
Undeclared	67	27	5
Undergraduate	59	22	2
Post-Baccalaureate	6	5	3
Graduate	2		
<b>Business</b>	<b>2,566</b>	<b>1,383</b>	<b>718</b>
Accounting & Finance	310	234	172
Undergraduate	233	175	128
Post-Baccalaureate	19	18	11
Graduate	58	41	33
Computing & Cyber Security	381	212	93
Undergraduate	377	208	91
Post-Baccalaureate	4	4	2
Management & Marketing	1,871	935	452
Undergraduate	1,612	764	322
Post-Baccalaureate	6	5	4
Graduate	253	166	126
Undeclared	4	2	1
Graduate	4	2	1
<b>Education &amp; Human Development</b>	<b>1,966</b>	<b>1,101</b>	<b>627</b>
Counseling, Health & Kinesiology	733	380	230
Undergraduate	525	260	153
Post-Baccalaureate	3	2	1
Graduate	205	118	76
Educator & Leadership Preparation	1,196	691	378
Undergraduate	936	531	275
Post-Baccalaureate	6	6	1
Graduate	254	154	102
Undeclared	37	30	19
Graduate	37	30	19
<b>Unknown</b>	<b>68</b>	<b>20</b>	<b>2</b>
Undergraduate	65	19	1
Post-Baccalaureate	1		
Graduate	2	1	1

Enrollment by Level Fall 2009 - 2016<sup>4</sup>

	2009		2010		2011		2012		2013		2014		2015		2016	
	#	%	#	%	#	%	#	%	#	%	#	%	#	%	#	%
<b>Undergraduate</b>	1,757	75.0%	2,324	74.5%	2,604	73.3%	2,983	72.5%	3,316	73.5%	3,444	76.2%	3,634	79.6%	4,568	83.4%
<b>Graduate</b>	586	25.0%	796	25.5%	950	26.7%	1,133	27.5%	1,196	26.5%	1,077	23.8%	930	20.4%	906	16.6%
<b>Total</b>	2,343		3,120		3,554		4,116		4,512		4,521		4,564		5,474	

Enrollment by Coordinating Board Classification Fall 2009 - 2016

	2009		2010		2011		2012		2013		2014		2015		2016	
	#	%	#	%	#	%	#	%	#	%	#	%	#	%	#	%
<b>Undergraduate</b>	1,740	74.3%	2,301	73.75%	2,569	72.28%	2,931	71.21%	3,264	72.34%	3,386	74.89%	3,571	78.24%	4,507	82.3%
<b>Post-Baccalaureate</b>	17	0.7%	23	0.74%	35	0.98%	52	1.26%	52	1.15%	58	1.28%	63	1.38%	61	1.1%
<b>Graduate</b>	586	25.0%	796	25.51%	950	26.73%	1,133	27.53%	1,196	26.51%	1,077	23.82%	930	20.38%	906	16.6%
<b>Total</b>	2,343		3,120		3,554		4,116		4,512		4,521		4,564		5,474	



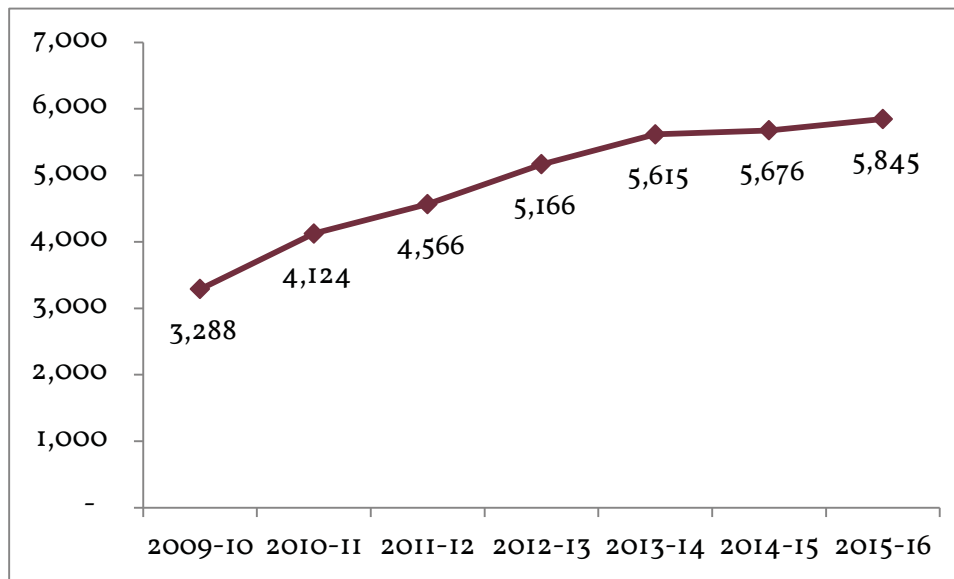
A&M-SA's enrollment has grown by 134% since 2009.

4 Source: CBM001. Each student is counted once regardless of number of enrolled courses.

## Annual Enrollment by Level<sup>5</sup>

	2009-2010	2010-2011	2011-2012	2012-2013	2013-2014	2014-2015	2015-2016
<b>Fall</b>							
Undergraduate	1,740	2,301	2,569	2,931	3,264	3,386	3,571
Post-Baccalaureate	17	23	35	52	52	58	63
Graduate	586	796	950	1,133	1,196	1,077	930
<b>Total</b>	<b>2,343</b>	<b>3,120</b>	<b>3,554</b>	<b>4,116</b>	<b>4,512</b>	<b>4,521</b>	<b>4,564</b>
<b>Spring</b>							
Undergraduate	1,865	2,348	2,573	2,778	3,155	3,219	3,508
Post-Baccalaureate	25	27	39	48	53	47	55
Graduate	678	866	988	1,100	1,100	941	861
<b>Total</b>	<b>2,568</b>	<b>3,241</b>	<b>3,600</b>	<b>3,926</b>	<b>4,308</b>	<b>4,207</b>	<b>4,424</b>
<b>Summer</b>							
Undergraduate	978	1,033	1,028	1,249	1,332	1,463	1,633
Post-Baccalaureate	13	15	17	16	19	22	28
Graduate	440	477	565	636	575	459	513
<b>Total</b>	<b>1,431</b>	<b>1,525</b>	<b>1,610</b>	<b>1,901</b>	<b>1,926</b>	<b>1,944</b>	<b>2,174</b>

## Annual Unduplicated Enrollment<sup>6</sup>

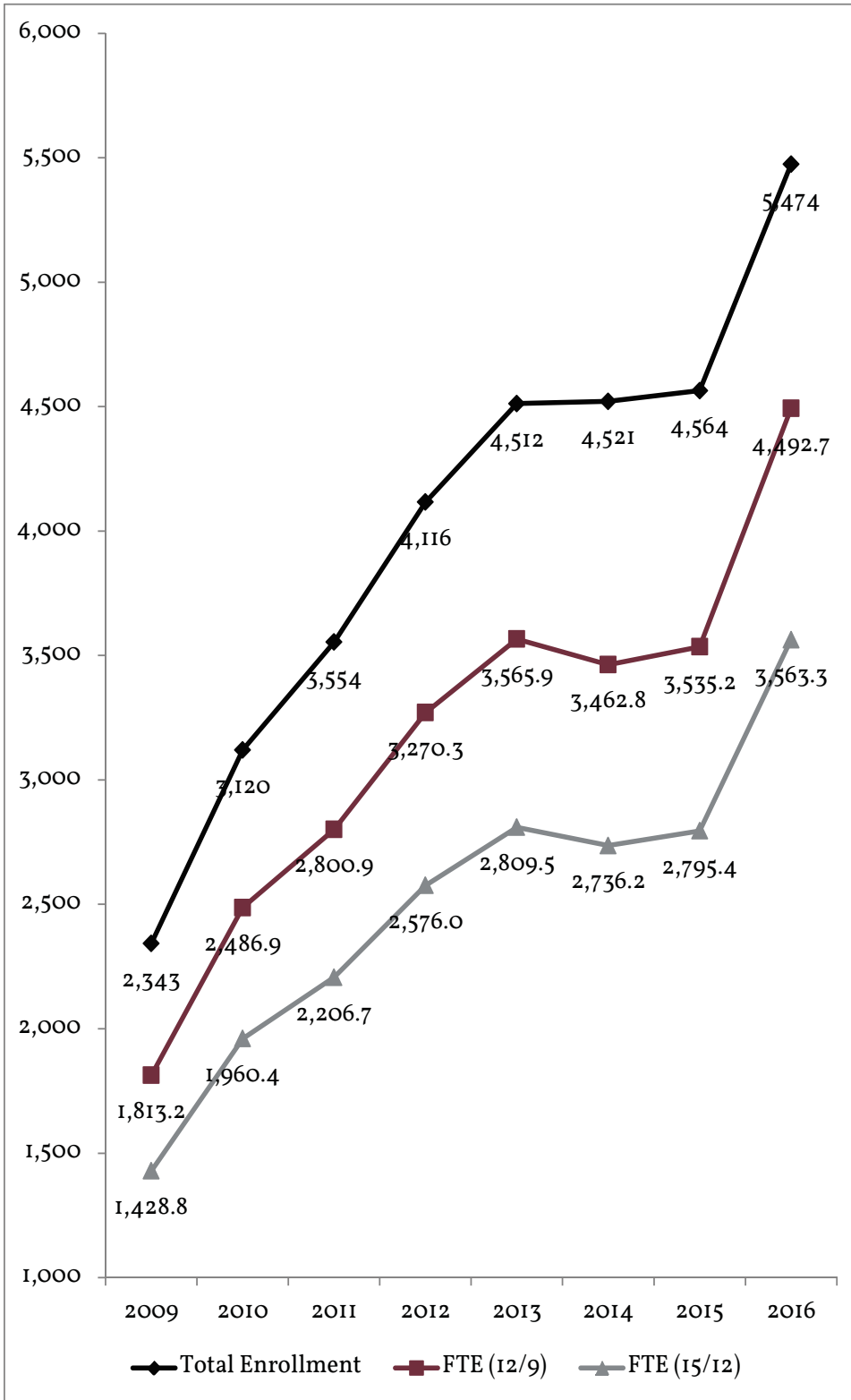


<sup>5</sup> Source: CBMoor.

<sup>6</sup> Students who enrolled in more than one semester of the academic year are counted only once in this total.

## FTE Enrollment, Fall 2009 - 2016

	2009	2010	2011	2012	2013	2014	2015	2016
<b>Total Enrollment</b>	2,343	3,120	3,554	4,116	4,512	4,521	4,564	5,474
<b>FTE (12/9)</b>	1,813.2	2,486.9	2,800.9	3,270.3	3,565.9	3,462.8	3,535.2	4,492.7
<b>FTE (15/12)</b>	1,428.8	1,960.4	2,206.7	2,576.0	2,809.5	2,736.2	2,795.4	3,563.3



**The College of Arts & Sciences added two departments in 2013, and a third in 2016. In 2014, the College of Business added two departments, and a third in 2016. In 2014, the College of Education & Human Development reorganized its departments. Departments in *italics* have been eliminated.**

**Over two-thirds of A&M-SA's students identify as Hispanic or Latino.**

FTE (12/9) is based on 12 SCH per undergraduate student and 9 SCH per graduate student.  
 FTE (15/12) is based on 15 SCH per undergraduate student and 12 SCH per graduate student.

## Detailed Composition of Student Body, Fall 2012 - 2016<sup>7</sup>

	2012		2013		2014		2015		2016	
	#	%	#	%	#	%	#	%	#	%
<b>Attendance Status</b>										
Full-Time	1,634	39.7%	1,703	37.7%	1,720	38.0%	1,778	39.0%	2,541	46.4%
Part-Time	2,482	60.3%	2,809	62.3%	2,801	62.0%	2,786	61.0%	2,933	53.6%
<b>Enrollment by College</b>										
Arts & Sciences	1,316	32.0%								
Arts & Humanities									409	7.5%
<i>Humanities &amp; Social Sciences</i>			1,077	23.9%	1,180	26.1%	1,237	27.1%		
Science & Mathematics			428	9.5%	415	9.2%	468	10.3%	742	13.6%
Social Sciences									1,005	18.4%
Business	1,198	29.1%	1,310	29.0%						
<i>Accounting, Computing, &amp; Finance</i>					533	11.8%	523	11.5%		
Accounting & Finance									432	7.9%
Computing & Cyber Security									168	3.1%
Management & Marketing					840	18.6%	870	19.1%	1,031	18.8%
Education & Human Development										
Counseling, Health, & Kinesiology					482	10.7%	438	9.6%	509	9.3%
<i>Curriculum &amp; Kinesiology</i>	1,124	27.3%	1,159	25.7%						
Educator & Leadership Preparation					1,047	23.2%	996	21.8%	1,121	20.5%
<i>Leadership &amp; Counseling</i>	459	11.2%	514	11.4%						
Unknown	19	0.5%	24	0.5%	24	0.5%	32	0.7%	57	1.0%
<b>Gender</b>										
Female	2,774	67.4%	2,970	65.8%	2,907	64.3%	2,917	63.9%	3,461	63.2%
Male	1,342	32.6%	1,542	34.2%	1,614	35.7%	1,647	36.1%	2,013	36.8%
<b>Race</b>										
American Indian or Alaskan Native	69	1.7%	90	2.0%	108	2.4%	104	2.3%	116	2.1%
Asian	48	1.2%	69	1.5%	65	1.4%	66	1.5%	106	1.9%
Black or African-American	270	6.6%	283	6.3%	294	6.5%	293	6.4%	421	7.7%
International	19	0.5%	30	0.7%	42	0.9%	49	1.1%	93	1.7%
Multiracial	102	2.5%	120	2.7%	163	3.6%	157	3.4%	190	3.5%
Native Hawaiian or Other Pacific Islander	4	0.1%	7	0.2%	5	0.1%	9	0.2%	16	0.3%
Unknown or Not Reported	1,021	24.8%	963	21.3%	893	19.8%	870	19.1%	947	17.3%
White	2,583	62.8%	2,950	65.4%	2,951	65.3%	3,016	66.1%	3,585	65.5%
<b>Ethnicity</b>										
Hispanic or Latino	2,797	67.95%	3,052	67.64%	3,026	66.93%	3,071	67.29%	3,837	70.1%
Not Hispanic or Latino	1,233	29.96%	1,378	30.54%	1,425	31.52%	1,443	31.62%	1,574	28.8%
Unreported	86	2.09%	82	1.82%	70	1.55%	50	1.10%	63	1.2%
<b>Total Enrollment</b>	<b>4,116</b>		<b>4,512</b>		<b>4,521</b>		<b>4,564</b>		<b>5,474</b>	

**73% of enrolled students report that they are the first generation in their families to attend college.**

**16% of enrolled students report a personal or immediate family affiliation with a branch of the military.**

<sup>7</sup> Source: CBMOOI. As of fall 2012, the Texas Higher Education Coordinating Board had disaggregated the reporting of race and ethnicity. Because of this shift in reporting, the total for all races prior to fall 2012 will be less than the total enrollment for those years.

## Detailed Composition of Undergraduate Student Body, Fall 2012 - 2016

	2012		2013		2014		2015		2016	
	#	%	#	%	#	%	#	%	#	%
<b>Attendance Status</b>										
Full-Time	1,435	48.1%	1,513	45.6%	1,444	41.9%	1,536	42.3%	2,328	51.0%
Part-Time	1,548	51.9%	1,803	54.4%	2,000	58.1%	2,098	57.7%	2,240	49.0%
<b>Enrollment by College</b>										
Arts & Sciences	1,299	43.6%								
Arts & Humanities									392	8.6%
<i>Humanities &amp; Social Sciences</i>			1,061	32.0%	1,160	33.7%	1,218	33.5%		
Science & Mathematics			428	12.9%	415	12.1%	468	12.9%	742	16.2%
Social Sciences									1,005	22.0%
Business	765	25.7%	890	26.8%						
<i>Accounting, Computing, &amp; Finance</i>					476	13.8%	461	12.7%		
Accounting & Finance									344	7.5%
Computing & Cyber Security									168	3.7%
Management & Marketing					478	13.9%	527	14.5%	711	15.6%
Education & Human Development										
Counseling, Health, & Kinesiology					173	5.0%	199	5.5%	289	6.3%
<i>Curriculum &amp; Kinesiology</i>	909	30.8%	929	28.0%						
Educator & Leadership Preparation					732	21.3%	757	20.8%	902	19.7%
<i>Leadership &amp; Counseling</i>										
Unknown	10	0.3%	8	0.2%	10	0.3%	4	0.1%	15	0.3%
<b>Gender</b>										
Female	2,022	67.8%	2,161	65.2%	2,182	63.4%	2,311	63.6%	2,862	62.7%
Male	961	32.2%	1,155	34.8%	1,262	36.6%	1,323	36.4%	1,706	37.3%
<b>Race</b>										
American Indian or Alaskan Native	54	1.8%	72	2.2%	88	2.6%	94	2.6%	109	2.4%
Asian	22	0.7%	40	1.2%	44	1.3%	49	1.4%	84	1.8%
Black or African-American	188	6.3%	203	6.1%	215	6.2%	223	6.1%	350	7.7%
International	15	0.5%	21	0.6%	30	0.9%	35	1.0%	78	1.7%
Multiracial	75	2.5%	90	2.7%	127	3.7%	133	3.7%	158	3.5%
Native Hawaiian or Other Pacific Islander	3	0.1%	6	0.2%	5	0.2%	7	0.2%	15	0.3%
Unknown or Not Reported	802	26.9%	771	23.3%	740	21.5%	743	20.5%	837	18.3%
White	1,824	61.2%	2,113	63.7%	2,195	63.7%	2,350	64.7%	2,937	64.3%
<b>Ethnicity</b>										
Hispanic or Latino	2,082	69.8%	2,282	68.8%	2,342	68.0%	2,504	68.9%	3,275	71.7%
Not Hispanic or Latino	833	27.9%	969	29.2%	1,050	30.5%	1,092	30.1%	1,249	27.3%
Unreported	68	2.3%	65	2.0%	52	1.5%	38	1.1%	44	1.0%
<b>Total Enrollment</b>	<b>2,983</b>		<b>3,316</b>		<b>3,444</b>		<b>3,634</b>		<b>4,568</b>	

## Detailed Composition of Graduate Student Body, Fall 2012 - 2016

	2012		2013		2014		2015		2016	
	#	%	#	%	#	%	#	%	#	%
<b>Attendance Status</b>										
Full-Time	319	28.2%	339	28.3%	276	25.6%	242	26.0%	213	23.5%
Part-Time	814	71.8%	857	71.7%	801	74.4%	688	74.0%	693	76.5%
<b>Enrollment by College</b>										
Arts & Sciences	17	1.5%								
Arts & Humanities									17	1.9%
<i>Humanities &amp; Social Sciences</i>			16	1.3%	20	1.9%	19	2.0%		
Science & Mathematics										
Social Sciences										
Business	433	38.2%	420	35.1%						
<i>Accounting, Computing, &amp; Finance</i>					57	5.3%	62	6.7%		
Accounting & Finance									84	9.3%
Computing & Cyber Security										
Management & Marketing					362	33.6%	343	36.9%	324	35.8%
Education & Human Development										
Counseling, Health, & Kinesiology					309	28.7%	239	25.7%	220	24.3%
<i>Curriculum &amp; Kinesiology</i>	215	19.0%	230	19.2%						
Educator & Leadership Preparation					315	29.3%	239	25.7%	219	24.2%
<i>Leadership &amp; Counseling</i>	459	40.5%	514	43.0%						
Unknown	9	0.8%	16	1.3%	14	1.3%	28	3.0%	42	4.6%
<b>Gender</b>										
Female	752	66.4%	809	67.6%	725	67.3%	606	65.2%	599	66.1%
Male	381	33.6%	387	32.4%	352	32.7%	324	34.8%	307	33.9%
<b>Race</b>										
American Indian or Alaskan Native	15	1.3%	18	1.5%	20	1.9%	10	1.1%	7	0.8%
Asian	26	2.3%	29	2.4%	21	2.0%	17	1.8%	22	2.4%
Black or African-American	82	7.2%	80	6.7%	79	7.3%	70	7.5%	71	7.8%
International	4	0.4%	9	0.8%	12	1.1%	14	1.5%	15	1.7%
Multiracial	27	2.4%	30	2.5%	34	3.2%	24	2.6%	32	3.5%
Native Hawaiian or Other Pacific Islander	1	0.1%	1	0.1%	0	0.0%	2	0.2%	1	0.1%
Unknown or Not Reported	219	19.3%	192	16.1%	155	14.4%	127	13.7%	110	12.1%
White	759	67.0%	837	70.0%	756	70.2%	666	71.6%	648	71.5%
<b>Ethnicity</b>										
Hispanic or Latino	715	63.1%	770	64.4%	684	63.5%	567	61.0%	562	62.0%
Not Hispanic or Latino	400	35.3%	409	34.2%	375	34.8%	351	37.7%	325	35.9%
Unreported	18	1.6%	17	1.4%	18	1.7%	12	1.3%	19	2.1%
<b>Total Enrollment</b>	<b>1,133</b>		<b>1,196</b>		<b>1,077</b>		<b>930</b>		<b>906</b>	



## Enrollment by Major, Fall 2009 - 2016<sup>s</sup>

	2009	2010	2011	2012	2013	2014	2015	2016
<b>Arts &amp; Sciences</b>								
<b>Arts &amp; Humanities</b>								
Communication								
Undergraduate	22	37	39	51	79	86	104	145
Post-baccalaureate				1				2
Total	22	37	39	52	79	86	104	147
English								
Undergraduate	42	55	72	90	84	100	89	105
Post-baccalaureate		1		1	1	2	2	
Graduate	3	10	12	17	16	20	19	17
Total	45	66	84	108	101	122	110	122
History								
Undergraduate	56	74	68	74	100	102	127	137
Post-baccalaureate	1	2		1	1	2	1	2
Total	58	76	68	75	101	104	128	139
Spanish								
Undergraduate								1
Post-baccalaureate								
Total								1
<b>Science &amp; Mathematics</b>								
Biology								
Undergraduate	40	91	119	135	147	151	183	340
Post-baccalaureate			1	5	3	1	1	2
Total	40	91	120	140	150	152	184	342
Mathematics								
Undergraduate	11	30	41	48	51	39	43	64
Post-baccalaureate			3	3	2	3	1	
Total	11	30	44	51	53	42	44	64
Psychology								
Undergraduate	128	164	199	223	224	219	238	334
Post-baccalaureate	1	4	4	1	1	2	2	2
Total	129	168	203	224	225	221	240	336

## Enrollment by Major, Fall 2009 - 2016 (con't.)

	2009	2010	2011	2012	2013	2014	2015	2016
<b>Social Sciences</b>								
Applied Arts & Sciences								
Undergraduate	170	183	228	349	423	468	440	469
Post-baccalaureate		1		3	3	2	4	7
Total	170	184	228	352	426	470	444	476
Criminology								
Undergraduate	102	155	186	207	253	267	301	358
Post-baccalaureate		1	1	5	1	3	3	1
Total	102	156	187	212	254	270	304	359
Political Science								
Undergraduate	6	8	16	17	23	27	32	44
Post-baccalaureate					1		1	
Total	6	8	16	17	24	27	33	44
Sociology								
Undergraduate	51	73	74	84	92	100	113	126
Post-baccalaureate			1	1		1	1	
Total	51	73	75	85	92	101	114	126
<b>Business</b>								
<b>Accounting &amp; Finance</b>								
Accounting								
Undergraduate	108	123	136	178	212	245	213	216
Post-baccalaureate	11	8	13	21	24	22	22	17
Graduate			29	49	47	57	62	84
Total	119	131	178	248	283	324	297	317
Finance								
Undergraduate	28	33	58	56	59	81	88	108
Post-baccalaureate				1				3
Total	28	33	58	57	59	81	88	111

**The Bachelor of Applied Arts  
& Sciences is the second largest  
undergraduate program.  
Over half of BAAS students pursue  
concentrations in Business.**

## Enrollment by Major, Fall 2009 - 2016 (con't.)

	2009	2010	2011	2012	2013	2014	2015	2016
<b>Computing &amp; Cyber Security</b>								
Computer Information Systems								
Undergraduate	70	74	94	94	92	91	94	101
Post-baccalaureate	1		4	4	4	5	6	4
Total	71	74	98	98	96	96	100	105
Computer Science								
Undergraduate				5	22	32	36	58
Post-baccalaureate							2	5
Total				5	22	32	38	63
<b>Management &amp; Marketing</b>								
Business Administration								
Post-baccalaureate								6
Graduate	153	257	321	384	373	362	343	324
Total	153	257	321	384	373	362	343	330
General Business Administration								
Undergraduate	39	93	103	137	176	165	159	242
Post-baccalaureate		1	2	1	2	5	3	1
Total	39	94	105	138	178	170	162	243
Beginning in 2016, General Business Administration includes lower-division students admitted as Pre-Business.								
International Business Management								
Undergraduate	9	31	31	31	25	31	37	49
Post-baccalaureate					1	1	2	2
Total	9	31	31	31	26	32	39	51
Management								
Undergraduate	172	202	152	184	203	209	257	333
Post-baccalaureate					3	3	5	
Total	172	202	152	184	206	212	262	333
Marketing								
Undergraduate	34	44	35	52	66	64	64	77
Post-baccalaureate		1		1	1			1
Total	34	45	35	53	67	64	64	78

**The Master of Business Administration is the largest graduate program at A&M-SA.**

**The Bachelor of Science in Interdisciplinary Studies is the largest undergraduate program at A&M-SA. Most graduates of this program will seek teacher certification.**

## Enrollment by Major, Fall 2009 - 2016 (con't.)

Education & Human Development								
Counseling, Health, & Kinesiology								
Counseling & Guidance								
Graduate	167	223	265	333	366	291	221	195
Total	167	223	265	333	366	291	221	195
Kinesiology								
Undergraduate	109	134	108	115	154	172	198	288
Post-baccalaureate			1	1	1	1	1	1
Graduate	6	11	27	22	18	18	18	17
Total	115	145	136	138	173	191	217	306
Marriage & Family Therapy								
Graduate								8
Total								8
Educator & Leadership Preparation								
Bilingual Education								
Graduate	46	33	36	31	27	41	33	31
Total	46	33	36	31	27	41	33	31
Early Childhood								
Graduate	44	46	43	48	58	47	30	27
Total	44	46	43	48	58	47	30	27
Educational Administration								
Graduate	72	105	111	126	148	110	77	75
Total	72	105	111	126	148	110	77	75
Grades 8-12 Certification								
Graduate	22	23	20	21	12	7	6	3
Total	22	23	20	21	12	7	6	3
Interdisciplinary Studies								
Undergraduate	543	696	807	792	772	729	753	900
Post-baccalaureate	2	2	4	1	2	3	4	2
Total	545	698	811	793	774	732	757	902
Beginning in 2016, Interdisciplinary Studies includes lower-division students admitted as Pre-Education.								
Reading Specialization								
Graduate	21	18	24	32	35	29	23	37
Total	21	18	24	32	35	29	23	37
Special Education								
Graduate	51	57	50	61	80	81	70	46
Total	51	57	50	61	80	81	70	46

## Enrollment by Major, Fall 2009 - 2016 (con't.)

Undeclared/Unknown								
Undergraduate		1	3	9	7	8	2	12
Post-baccalaureate	1	2	1	1	1	2	2	3
Graduate		13	12	9	16	14	28	42
Total	1	16	16	19	24	24	32	57
<b>Total Enrollment</b>	<b>2,343</b>	<b>3,120</b>	<b>3,554</b>	<b>4,116</b>	<b>4,512</b>	<b>4,521</b>	<b>4,564</b>	<b>5,474</b>

## Enrollment by Texas Residential County, Fall 2012 - 2016<sup>9</sup>

County	2012		2013		2014		2015		2016	
	#	%	#	%	#	%	#	%	#	%
<b>Bexar</b>	3,603	87.5%	3,977	88.1%	4,006	88.6%	3,948	86.5%	4,569	83.5%
<b>Atascosa</b>	63	1.5%	61	1.4%	73	1.6%	87	1.9%	127	2.3%
<b>Wilson</b>	101	2.5%	74	1.6%	66	1.5%	79	1.7%	109	2.0%
<b>Guadalupe</b>	48	1.2%	60	1.3%	54	1.2%	68	1.5%	106	1.9%
<b>Medina</b>	62	1.5%	63	1.4%	39	0.9%	52	1.1%	78	1.4%
<b>Comal</b>	28	0.7%	34	0.8%	31	0.7%	45	1.0%	56	1.0%
<b>Webb</b>	13	0.3%	13	0.3%	18	0.4%	30	0.7%	28	0.5%
<b>Kendall</b>	6	0.1%	5	0.1%	8	0.2%	13	0.3%	19	0.3%
<b>Frio</b>	17	0.4%	11	0.2%	7	0.2%	12	0.3%	16	0.3%
<b>Other Counties</b>	136	3.3%	172	3.8%	169	3.7%	180	3.9%	302	5.5%
<b>Total Texas</b>	4,077	99.1%	4,470	99.1%	4,471	98.9%	4,514	98.9%	5,410	98.8%
<b>Other States</b>	13	0.3%	14	0.3%	17	0.4%	23	0.5%	33	0.6%
<b>Other Countries</b>	26	0.6%	28	0.6%	33	0.7%	27	0.6%	31	0.6%
<b>Total</b>	<b>4,116</b>		<b>4,512</b>		<b>4,521</b>		<b>4,564</b>		<b>5,474</b>	

## Enrollment by Age, Fall 2012 - 2016<sup>10</sup>

	2012		2013		2014		2015		2016	
	#	%	#	%	#	%	#	%	#	%
<21	47	1.1%	73	1.6%	65	1.4%	110	2.4%	581	10.6%
21-25	1,128	27.4%	1,304	28.9%	1,344	29.7%	1,598	35.0%	1,770	32.3%
26-30	1,024	24.9%	1,121	24.8%	1,177	26.0%	1,111	24.3%	1,222	22.3%
31-35	652	15.8%	712	15.8%	690	15.3%	670	14.7%	721	13.2%
36-40	470	11.4%	474	10.5%	485	10.7%	399	8.7%	442	8.1%
41-45	328	8.0%	327	7.2%	309	6.8%	291	6.4%	325	5.9%
46-50	234	5.7%	250	5.5%	218	4.8%	208	4.6%	181	3.3%
>50	233	5.7%	251	5.6%	233	5.2%	177	3.9%	232	4.2%
<b>Total</b>	4,116		4,512		4,521		4,564		5,474	
<b>Average</b>	32.4		32.0		31.6		30.5		29.5	

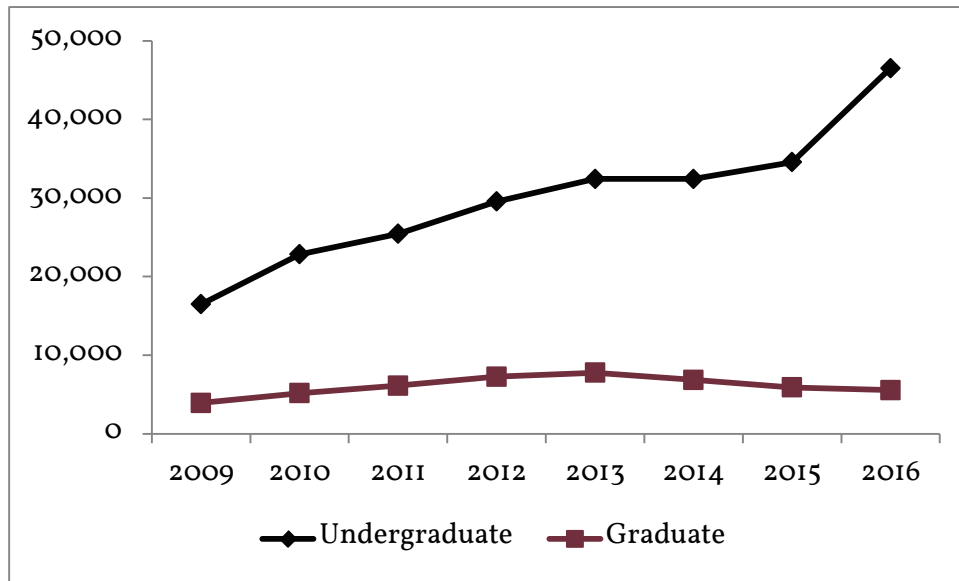
## Enrollment by Age and Level, Fall 2016

	Undergraduate		Post-baccalaureate		Graduate		Total	
	Count	Percent	Count	Percent	Count	Percent	Count	Percent
<21	581	12.9%					581	10.6%
21-25	1,630	36.2%	6	9.8%	134	14.8%	1,770	32.3%
26-30	948	21.0%	15	24.6%	259	28.6%	1,222	22.3%
31-35	527	11.7%	11	18.0%	183	20.2%	721	13.2%
36-40	317	7.0%	11	18.0%	114	12.6%	442	8.1%
41-45	221	4.9%	6	9.8%	98	10.8%	325	5.9%
46-50	127	2.8%	1	1.6%	53	5.8%	181	3.3%
>50	156	3.5%	11	18.0%	65	7.2%	232	4.2%
<b>Total</b>	4,507		61		906		5,474	
<b>Average</b>	28.5		37.0		34.3		29.5	

**With an average age of 23.3, the baccalaureate program in biology has the youngest students. The Department of Educator & Leadership Preparation houses the programs with the oldest students--the Master of Education programs in Early Childhood and Bilingual Education.**

## Credit Hours

### Semester Credit Hours, Fall 2009 - 2016<sup>11</sup>



## Semester Credit Hours by College & Level, Fall 2009 - 2016<sup>12</sup>

	2009	2010	2011	2012	2013	2014	2015	2016
<b>Arts &amp; Sciences</b>								
Undergraduate	5,441	8,003	9,899	11,025				
Graduate	21	48	69	105				
Total	5,462	8,051	9,968	11,130				
<b>Arts &amp; Humanities</b>								
Undergraduate								7,647
Graduate								114
Total								7,761
<b>Humanities &amp; Social Sciences</b>								
Undergraduate					7,854	7,513	8,481	
Graduate					84	123	102	
Total					7,938	7,636	8,583	
<b>Science &amp; Mathematics</b>								
Undergraduate					3,695	3,399	4,259	6,488
<b>Social Sciences</b>								
Undergraduate								6,558
<b>Business</b>								
Undergraduate	5,238	6,762	6,813	8,922	10,752			
Graduate	1,060.5	1,531.5	2,164.5	2,697	2,577			
Total	6,298.5	8,293.5	8,977.5	11,619	13,329			
<b>Accounting, Computing, &amp; Finance</b>								
Undergraduate						5,058	4,746	
Graduate						1,375.5	1,372.50	
Total						6,433.5	6,119	
<b>Accounting &amp; Finance</b>								
Undergraduate								3,018
Graduate								852
Total								3,870
<b>Computing &amp; Cyber Security</b>								
Undergraduate								2,301
Graduate								210
Total								2,511
<b>Management &amp; Marketing</b>								
Undergraduate						6,822	7,359	8,145
Graduate						1,171.5	1,098	1,422
Total						7,993.5	8,457	9,567



## Semester Credit Hours by College & Level, Fall 2009 - 2016 (con't.)

	2009	2010	2011	2012	2013	2014	2015	2016
<b>Education &amp; Human Development</b>								
<i>Counseling, Health, &amp; Kinesiology</i>								
Undergraduate						1,098	1,308	1,890
Graduate						2,127	1,620	1,524
Total						3,225	2,928	3,414
<i>Curriculum &amp; Kinesiology</i>								
Undergraduate	5,808	8,067	8,729	9,612	10,122			
Graduate	1,383	1,260	1,278	1,383	1,614			
Total	7,191	9,327	10,007	10,995	11,736			
<i>Educator &amp; Leadership Preparation</i>								
Undergraduate						8,535	8,415	9,828
Graduate						2,049	1,698	1,434
Total						10,584	10,113	11,262
<i>Leadership &amp; Counseling</i>								
Graduate	1,458	2,328	2,616	3,078	3,501			
<b>University College</b>								
Undergraduate								635
<b>Grand Total</b>								
Undergraduate	16,487	22,832	25,441	29,559	32,423	32,425	34,568	46,510
Graduate	3,922.5	5,167.5	6,127.5	7,263	7,776	6,846	5,890.50	5,556
Total	20,409.5	27,999.5	31,568.5	36,822	40,199	39,271	40,458.5	52,066

**The University College offers  
Jaguar Tracks--one-hour courses which  
undergraduate students take to discover  
their place on campus, develop a global  
perspective, become active members of the  
broader community within their disciplines,  
and ultimately discover their place in their  
professional fields.**

## Semester Credit Hours by College, Department, Discipline & Level, Fall 2016<sup>13</sup>

	UGRD	GRAD	Total
<b>Arts &amp; Sciences</b>			
Arts & Humanities			
Art	513		513
Communication	672		672
Communications - Journalism	246		246
English	2,151	114	2,265
History	2,445		2,445
Music	510		510
Philosophy	204		204
Radio, Television and Film	24		24
Spanish	336		336
Speech	426		426
Women's and Gender Studies	120		120
Arts & Humanities Total	7,647	114	7,761
Science & Mathematics			
Biology	1,762		1,762
Chemistry	413		413
Geography	114		114
Geology	128		128
Mathematics	1,588		1,588
Physics	106		106
Psychology	2,377		2,377
Science & Mathematics Total	6,488		6,488
Social Sciences			
Criminology	3,423		3,423
Government	936		936
Military Science	54		54
Political Science	408		408
Sociology	1,704		1,704
Southwest Borderlands Studies	33		33
Social Sciences Total	6,558		6,558
<b>Arts &amp; Sciences Total</b>	<b>20,693</b>	<b>114</b>	<b>20,807</b>

## Semester Credit Hours by College, Department, Discipline & Level, Fall 2016 (con't.)

	UGRD	GRAD	Total
<b>Business</b>			
Accounting & Finance			
Accounting	1,806	599	2,405
Economics	405	69	474
Finance	807	185	992
Accounting & Finance Total	3,018	852	3,870
Computing & Cyber Security			
Computer Information Systems	1,968	210	2,178
Computer Science	333		333
Computing & Cyber Security Total	2,301	210	2,511
Management & Marketing			
Business Administration	1,062	668	1,730
Business Communication	1,041		1,041
Business Law	876		876
Fire and Emergency Services	588		588
Management	3,501	590	4,091
Marketing	1,077	165	1,242
Management & Marketing Total	8,145	1,422	9,567
<b>Business Total</b>	<b>13,464</b>	<b>2,484</b>	<b>15,948</b>
<b>Education &amp; Human Development</b>			
Counseling, Health, & Kinesiology			
Counseling and Guidance		1,419	1,419
Health	207		207
Kinesiology	1,683	105	1,788
Counseling, Healthy, & Kinesiology Total	1,890	1,524	3,414
Educator & Leadership Preparation			
Bilingual Education	1,278	138	1,416
Early Childhood	1,017	111	1,128
Educational Administration		471	471
Education	4,032	189	4,221
Education Field Experience	918	54	972
Reading	1,140	243	1,383
Special Education	1,443	228	1,671
Educator & Leadership Preparation Total	9,828	1,434	11,262
<b>Education &amp; Human Development Total</b>	<b>11,718</b>	<b>2,958</b>	<b>14,676</b>
<b>University College</b>	<b>635</b>		<b>635</b>
<b>Grand Total</b>	<b>46,510</b>	<b>5,556</b>	<b>52,066</b>

## Semester Credit Hours by College, Department, Major, & Level, Fall 2016<sup>14</sup>

	UGRD	PB	GRAD	Total
<b>Arts &amp; Sciences</b>				
Arts & Humanities				
Communication	1,555	12		1,567
English	1,040		114	1,154
History	1,435	18		1,453
Spanish	3			3
Arts & Humanities Total	4,033	30	114	4,177
Science & Mathematics				
Biology	3,788	19		3,807
Mathematics	644			644
Psychology	3,312	13		3,325
Science & Mathematics Total	7,744	32		7,776
Social Sciences				
Applied Arts & Sciences	4,102	45		4,147
Criminology	3,723	3		3,726
Political Science	481			481
Sociology	1,153			1,153
Social Sciences Total	9,459	48		9,507
<b>Arts &amp; Sciences Total</b>	<b>21,236</b>	<b>110</b>	<b>114</b>	<b>21,460</b>
<b>Business</b>				
Accounting & Finance				
Accounting	2,066	132	561	2,759
Finance	1,093	24		1,117
Accounting & Finance Total	3,159	156	561	3,876
Computing & Cyber Security				
Computer Information Systems	1,036	27		1,063
Computer Science	632	33		665
Computing & Cyber Security Total	1,668	60		1,728
Management & Marketing				
Business Administration			1,917	1,917
General Business Administration	2,580	6		2,586
International Business Administration	505	9		514
Management	3,317	51		3,368
Marketing	818	12		830
Management & Marketing Total	7,220	78	1,917	9,215
<b>Business Total</b>	<b>12,047</b>	<b>294</b>	<b>2,478</b>	<b>14,819</b>

## Semester Credit Hours by College, Department, Major & Level, Fall 2016 (con't.)

	UGRD	PB	GRAD	Total
<b>Education &amp; Human Development</b>				
Counseling, Health, & Kinesiology				
Counseling and Guidance			1,293	1,293
Kinesiology	2,932	14	119	3,065
Counseling, Health, & Kinesiology Total	2,932	14	1,412	4,358
Educator & Leadership Preparation				
Bilingual Education			201	201
Early Childhood			168	168
Educational Administration			369	369
Grades 8-12 Certification			12	12
Interdisciplinary Studies	9,752	30		9,782
Reading Specialization			222	222
Special Education			336	336
Educator & Leadership Preparation Total	9,752	30	1,308	11,090
<b>Education &amp; Human Development Total</b>	<b>12,684</b>	<b>44</b>	<b>2,720</b>	<b>15,448</b>
<b>Unknown</b>	<b>81</b>	<b>9</b>	<b>252</b>	<b>342</b>
<b>Grand Total</b>	<b>46,048</b>	<b>457</b>	<b>5,564</b>	<b>52,069</b>

## Student/Faculty Ratio, Fall 2012 - 2016

	2012	2013	2014	2015	2016
<b>FTE (12/9)</b>					
Undergraduate	2,463.3	2,701.9	2,702.1	2,880.7	3,875.3
Graduate	807.0	864.0	760.7	654.5	617.3
Total	3,270.3	3,565.9	3,462.8	3,535.2	4,492.7
S/F Ratio	22.6	23.1	21.5	22.5	22.6
<b>FTE (15/12)</b>					
Undergraduate	1,970.6	2,161.5	2,161.7	2,304.5	3,100.3
Graduate	605.3	648.0	570.5	490.9	463.0
Total	2,575.9	2,809.5	2,736.2	2,795.4	3,563.3
S/F Ratio	17.8	18.2	17.0	17.8	18.0
<b>Faculty FTE</b>	<b>144.5</b>	<b>154.25</b>	<b>161.375</b>	<b>157.4</b>	<b>198.5</b>

## Class & Semester Credit Hour Load, Fall 2010 - 2016<sup>15</sup>

	2010	2011	2012	2013	2014	2015	2016
<b>Class Sections Offered</b>	<b>459</b>	<b>540</b>	<b>595</b>	<b>632</b>	<b>648</b>	<b>632</b>	<b>845</b>
<b>Instruction Type</b>							
Organized*	455	534	572	602	603	587	840
Individual Instruction	4	6	23	30	45	45	5
<b>Instruction Mode</b>							
Face-to-Face	443	360	370	407	430	384.5	596
Online	16	52	75	74	58	57.5	67
Two-Way Interactive Video							
Video Tape/DVD and/or Broadcast TV						1	1
Multiple or Other Electronic Media			1				32
Hybrid		128	149	151	160	189	149
<b>Average Size</b>							
Organized Class*	21.2	20.2	21.8	22.5	21.6	23.0	21.7
Undergraduate	22.1	21.0	22.4	23.7	23.3	24.8	22.9
Graduate	18.1	17.4	19.8	18.5	16.1	16.1	14.9
<b>Average SCH Load/Student</b>							
Undergraduate	9.8	9.8	9.9	9.8	9.4	9.5	10.2
Graduate	6.5	6.5	6.4	6.5	6.4	6.4	6.1
<b>Average Class Load/Student</b>							
Undergraduate	3.1	3.0	3.0	3.1	3.0	3.0	3.3
Graduate	3.3	3.3	3.3	3.3	3.2	3.2	3.6
Graduate	2.3	2.2	2.2	2.3	2.3	2.2	2.1

\*Organized classes include those classified as lecture, laboratory, or seminar.

<sup>15</sup> Source: CBM001 and CBM004. Hyflex courses were counted as Face-to-Face through 2015, but were reported as Multiple or Electronic Media beginning in 2016.

## Annual SCH by Level, 2009 - 2016<sup>16</sup>

	2009-10	2010-11	2011-12	2012-13	2013-14	2014-15	2015-16
<b>Fall</b>							
Undergraduate	16,508	22,832	25,441	29,559	32,423	32,425	34,550
Graduate	3,943.50	5,257.5	6,127.5	7,263	7,776	6,846	5,908.5
Total	20,451.5	28,089.5	31,568.5	36,822	40,199	39,271	40,458.5
<b>Spring</b>							
Undergraduate	18,450	22,374	25,882	27,635	31,112	31,351	33,799
Graduate	4,669.5	5,766	6,438	7,176	7,152	6,079.5	5,109
Total	23,119.5	28,140	32,320	34,811	38,264	37,431	38,908
<b>Summer</b>							
Undergraduate	6,661	7,062	6,819	8,142	8,643	9,609	10,743
Graduate	2,740.5	2,967	3,414	3,835.5	3,231	2,872.5	2,514
Total	9,401.5	10,029	10,233	11,977.5	11,874	12,482	13,257
<b>Total</b>							
Undergraduate	41,619	52,268	58,142	65,336	72,178	73,385	79,092
Graduate	11,353.5	13,990.5	15,979.5	18,274.5	18,159	15,798	13,532
Total	52,972.5	66,258.5	74,121.5	83,610.5	90,337	89,183	92,624

## SCH Generated by Instruction Mode, Fall 2010 - 2016<sup>17</sup>

	2010	2011	2012	2013	2014	2015	2016
<b>Face-to-Face</b>							
Sections	443	360	370	407	430	384.5	596
Enrollment	9,329	6,764	7,208	8,179	7,959	7,771	11,970
SCH	27,201.5	19,762	21,306	23,751	23,349	22,697	33,184
<b>Online</b>							
Sections	16	52	75	74	58	57.5	67
Enrollment	336	1,487	1,991	1,914	1,483	1,440	1,436
SCH	888	4,186.5	5,571	5,496	4,167	4,504.5	4,251
<b>Video Tape/DVD and/or Broadcast TV</b>							
Sections						1	1
Enrollment						2	12
SCH						6	36
<b>Multiple or Other Electronic Media</b>							
Sections			1				32
Enrollment			3				1,144
SCH			9				3,432
<b>Hybrid</b>							
Sections		128	149	151	160	189	149
Enrollment		2,540	3,359	3,689	3,930	4,617	3,753
SCH		7,620	9,936	10,952	11,755	13,701	11,163
<b>Total</b>							
Sections	459	540	595	632	648	631	845
Enrollment	9,665	10,791	12,561	13,782	13,372	13,830	18,315
SCH	28,089.5	31,568.5	36,822	40,199	39,271	40,458.5	52,066



## SCH Generated by College, Department, Instruction Mode, & Level, Fall 2016<sup>18</sup>

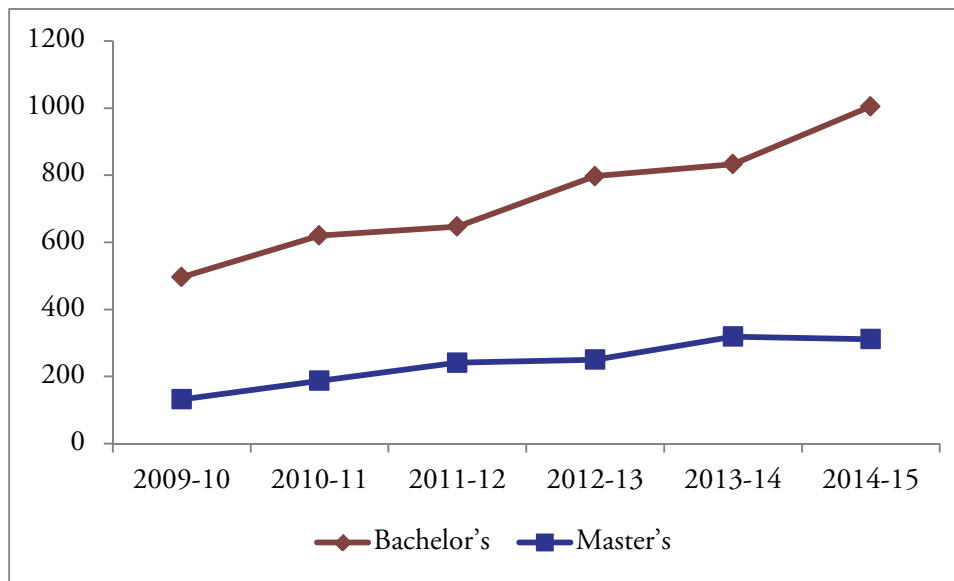
	UGRD		GRAD		Total	
	Sections	SCH	Sections	SCH	Sections	SCH
<b>Arts &amp; Sciences</b>						
Arts & Humanities						
Face-to-Face	103.5	7,245	6	114	109.5	7,359
Online	5.5	195			5.5	195
Hybrid	2.5	207			2.5	207
Science & Mathematics						
Face-to-Face	122	5,828			122	5,828
Online	6.5	561			6.5	561
Hybrid	2	99			2	99
Social Sciences						
Face-to-Face	60.5	3,762			60.5	3,762
Online	20	1,938			20	1,938
Hybrid	12.5	858			12.5	858
<b>Business</b>						
Accounting & Finance						
Face-to-Face	20	1,335	3	267	23	1,602
Online			5	39	5	39
Multiple or Other Electronic Media	5	561	2	96	7	657
Hybrid	12.5	1,122	5.5	450	18	1,572
Computing & Cyber Security						
Face-to-Face	30.5	1,473	0.5	3	31	1,476
Online	2	6			2	6
Multiple or Other Electronic Media	1.5	177	1.5	105	3	282
Hybrid	10	645	1	102	11	747
Management & Marketing						
Face-to-Face	10	903	2	39	12	942
Online	11	591	3	18	14	609
Multiple or Other Electronic Media	17.5	1,737	4.5	756	22	2,493
Hybrid	53	4,914	8	609	61	5,523
<b>Education &amp; Human Development</b>						
Counseling, Health, & Kinesiology						
Face-to-Face	23	1,692	35	1,236	58	2,928
Online	2	198			2	198
Video Tape/DVD and/or Broadcast TV			1	36	1	36
Hybrid			5	252	5	252
Educator & Leadership Preparation						
Face-to-Face	130	8,220	18	432	148	8,652
Online	8	516	4	189	12	705
Hybrid	14	1,092	23	813	37	1,905

**SCH Generated by College, Department, Instruction Mode, & Level, Fall 2016 (con't.)**

	<b>UGRD</b>		<b>GRAD</b>		<b>Total</b>	
	Sections	SCH	Sections	SCH	Sections	SCH
<b>University College</b>						
Face-to-Face	32	635			32	635
<b>Total</b>						
Face-to-Face	531.5	31,093	64.5	2,091	596	33,184
Online	55	4,005	12	246	67	4,251
Video Tape/DVD and/or Broadcast TV			1	36	1	36
Multiple or Other Electronic Media	24	2,475	8	957	32	3,432
Hybrid	106.5	8,937	42.5	2,226	149	11,163

## Degrees Awarded

### Annual Degrees Conferred by Level<sup>19</sup>



**As of August 2016, 8,257 graduates had earned 8,943 degrees at A&M-San Antonio, with some graduates earning multiple degrees.**

### Annual Degrees Conferred by Level & Gender

	2010-11		2011-12		2012-13		2013-14		2014-15		2015-16	
	#	%	#	%	#	%	#	%	#	%	#	%
<b>Bachelor's</b>												
Female	427	68.9%	424	65.5%	561	70.4%	562	67.5%	626	62.3%	623	59.9%
Male	193	31.1%	223	34.5%	236	29.6%	271	32.5%	379	37.7%	417	40.1%
Total	627		647		797		833		1,005		1,040	
<b>Master's</b>												
Female	140	74.9%	173	71.8%	164	65.6%	214	67.1%	216	69.5%	188	67.4%
Male	47	25.1%	68	28.2%	86	34.4%	105	32.9%	95	30.5%	91	32.6%
Total	187		241		250		319		311		279	
<b>Total</b>												
Female	567	70.3%	597	67.2%	725	69.2%	776	67.4%	842	64.0%	811	61.5%
Male	240	29.7%	291	32.8%	322	30.8%	376	32.6%	474	36.0%	508	38.5%
Total	807		888		1,047		1,152		1,316		1,319	

## Annual Degrees Conferred by Level & Ethnicity<sup>20</sup>

	2010-11		2011-12		2012-13		2013-14		2014-15		2015-16	
	#	%	#	%	#	%	#	%	#	%	#	%
<b>Bachelor's</b>												
Hispanic or Latino origin	406	65.5%	407	62.9%	558	70.0%	594	71.3%	681	67.8%	691	66.4%
Not Hispanic or Latino origin	178	28.7%	198	30.6%	220	27.6%	227	27.3%	306	30.4%	335	32.2%
Unknown	36	5.8%	42	6.5%	19	2.4%	12	1.4%	18	1.8%	14	1.3%
<b>Master's</b>												
Hispanic or Latino origin	102	54.5%	145	60.2%	148	59.2%	200	62.7%	204	65.6%	164	58.8%
Not Hispanic or Latino origin	67	35.8%	79	32.8%	96	38.4%	114	35.7%	102	32.8%	111	39.8%
Unknown	18	9.6%	17	7.1%	6	2.4%	5	1.6%	5	1.6%	4	1.4%
<b>Total</b>												
Hispanic or Latino origin	508	62.9%	552	62.2%	706	67.4%	794	68.9%	885	67.2%	855	64.8%
Not Hispanic or Latino origin	245	30.4%	277	31.2%	316	30.2%	341	29.6%	408	31.0%	446	33.8%
Unknown	54	6.7%	59	6.6%	25	2.4%	17	1.5%	23	1.7%	18	1.4%

## Annual Degrees Conferred by Level & Race<sup>21</sup>

	2010-11		2011-12		2012-13		2013-14		2014-15		2015-16	
	#	%	#	%	#	%	#	%	#	%	#	%
<b>Bachelor's</b>												
American Indian or Alaskan Native	7	1.1%	12	1.9%	12	1.5%	10	1.2%	20	2.0%	27	2.6%
Asian	1	0.2%	4	0.6%	7	0.9%	5	0.6%	15	1.5%	13	1.3%
Black or African-American	34	5.5%	32	4.9%	47	5.9%	52	6.2%	59	5.9%	50	4.8%
International	3	0.5%	1	0.2%	5	0.6%	2	0.2%	11	1.1%	5	0.5%
Multiracial	5	0.8%	9	1.4%	22	2.8%	26	3.1%	33	3.3%	51	4.9%
Native Hawaiian or Other Pacific Islander			1	0.2%	1	0.1%	1	0.1%	1	0.1%		
Unknown or Not Reported	333	53.7%	276	42.7%	257	32.2%	184	22.1%	212	21.1%	210	20.2%
White	237	38.2%	312	48.2%	446	56.0%	553	66.4%	654	65.1%	684	65.8%
<b>Master's</b>												
American Indian or Alaskan Native		0.0%	2	0.8%	2	0.8%	3	0.9%	6	1.9%	3	1.1%
Asian		0.0%	1	0.4%	5	2.0%	9	2.8%	10	3.2%	4	1.4%
Black or African-American	11	5.9%	15	6.2%	18	7.2%	19	6.0%	14	4.5%	21	7.5%
International	1	0.5%	1	0.4%	2	0.8%	2	0.6%	4	1.3%	7	2.5%
Multiracial	3	1.6%	7	2.9%	8	3.2%	9	2.8%	13	4.2%	8	2.9%
Native Hawaiian or Other Pacific Islander					1	0.4%	1	0.3%		0.0%		
Unknown or Not Reported	101	54.0%	109	45.2%	62	24.8%	48	15.0%	47	15.1%	50	17.9%
White	71	38.0%	106	44.0%	152	60.8%	228	71.5%	217	69.8%	186	66.7%
<b>Total</b>												
American Indian or Alaskan Native	7	0.9%	14	1.6%	14	1.3%	13	1.1%	26	2.0%	30	2.3%
Asian	1	0.1%	5	0.6%	12	1.1%	14	1.2%	25	1.9%	17	1.3%
Black or African-American	45	5.6%	47	5.3%	65	6.2%	71	6.2%	73	5.5%	71	5.4%
International	4	0.5%	2	0.2%	7	0.7%	4	0.3%	15	1.1%	12	0.9%
Multiracial	8	1.0%	16	1.8%	30	2.9%	35	3.0%	46	3.5%	59	4.5%
Native Hawaiian or Other Pacific Islander			1	0.1%	2	0.2%	2	0.2%	1	0.1%		
Unknown or Not Reported	434	53.8%	385	43.4%	319	30.5%	232	20.1%	259	19.7%	260	19.7%
White	308	38.2%	418	47.1%	598	57.1%	781	67.8%	871	66.2%	870	66.0%

## Annual Degrees Conferred by College, Department, & Level

	2009-10	2010-11	2011-12	2012-13	2013-14	2014-15	2015-16
<b>Arts &amp; Sciences</b>							
Bachelor's	203	253	306	366			
Master's			3	3			
Total	203	253	309	369			
<b>Arts &amp; Humanities</b>							
Bachelor's							94
Master's							6
Total							100
<b>Humanities &amp; Social Sciences</b>							
Bachelor's					301	406	
Master's					7	7	
Total					308	413	
<b>Science &amp; Mathematics</b>							
Bachelor's					87	94	123
<b>Social Sciences</b>							
Bachelor's							349
<b>Business</b>							
Bachelor's	113	144	129	159			
Master's	20	36	76	88			
Total	133	180	205	247			
<b>Accounting, Computing, &amp; Finance</b>							
Bachelor's					66	115	
Master's					17	22	
Total					83	137	
<b>Accounting &amp; Finance</b>							
Bachelor's							79
Master's							12
Total							91
<b>Computing &amp; Cyber Security</b>							
Bachelor's							29
<b>Management &amp; Marketing</b>							
Bachelor's					104	126	116
Master's					103	97	101
Total					207	223	217

## Degrees Conferred by College, Department, & Level, Fall 2016 (con't.)

	2009-10	2010-11	2011-12	2012-13	2013-14	2014-15	2015-16
<b>Education &amp; Human Development</b>							
<i>Counseling, Health, &amp; Kinesiology</i>							
Bachelor's					31	38	52
Master's					105	98	77
Total					136	136	129
<i>Curriculum &amp; Kinesiology</i>							
Bachelor's	180	223	212	272			
Master's	52	50	52	51			
Total	232	273	264	323			
<i>Educator &amp; Leadership Preparation</i>							
Bachelor's					244	226	198
Master's					87	87	83
Total					331	313	281
<i>Leadership &amp; Counseling</i>							
Master's	60	101	110	108			
<b>Total</b>							
Bachelor's	496	620	647	797	833	1,005	1,040
Master's	132	187	241	250	319	311	279
Total	628	807	888	1,047	1,152	1,316	1,319

## Degrees Conferred by College, Department, Major, & Level<sup>22</sup>

	2009-10	2010-11	2011-12	2012-13	2013-14	2014-15	2015-16
<b>Arts &amp; Sciences</b>							
<b>Arts &amp; Humanities</b>							
Communications							
Bachelor's	I	7	11	11	23	22	24
Master's							
Total	I	7	11	11	23	22	24
English							
Bachelor's	10	18	15	28	18	22	30
Master's			3	3	7	7	6
Total	10	18	18	31	25	29	36
History							
Bachelor's	23	17	15	16	22	20	40
Master's							
Total	23	17	15	16	22	20	40
<b>Science &amp; Mathematics</b>							
Biology							
Bachelor's	I	15	27	33	29	32	54
Master's							
Total	I	15	27	33	29	32	54
Mathematics							
Bachelor's	4	I	10	7	9	9	8
Master's							
Total	4	I	10	7	9	9	8
Psychology							
Bachelor's	32	34	52	68	49	53	61
Master's							
Total	32	34	52	68	49	53	61
<b>Social Sciences</b>							
Applied Arts & Sciences							
Bachelor's	99	106	104	123	148	236	213
Master's							
Total	99	106	104	123	148	236	213
Criminology							
Bachelor's	22	35	51	49	66	64	97
Master's							
Total	22	35	51	49	66	64	97
Political Science							
Bachelor's	3	I	3	3	3	5	10
Master's							
Total	3	I	3	3	3	5	10
Sociology							
Bachelor's	8	19	18	28	21	37	29
Master's							
Total	8	19	18	28	21	37	29



## Degrees Conferred by College, Department, Major, & Level (con't.)

	2009-10	2010-11	2011-12	2012-13	2013-14	2014-15	2015-16
<b>Business</b>							
Accounting & Finance							
Accounting							
Bachelor's	32	29	30	33	38	70	59
Master's		2	10	13	17	22	12
Total	32	31	40	46	55	92	71
Finance							
Bachelor's	5	5	10	12	8	21	20
Master's							
Total	5	5	10	12	8	21	20
Computing & Cyber Security							
Computer Information Systems							
Bachelor's	14	8	15	23	16	19	20
Master's							
Total	14	8	15	23	16	19	20
Computer Science							
Bachelor's					4	5	9
Master's							
Total					4	5	9
Management & Marketing							
Business Administration							
Bachelor's							
Master's	20	34	66	75	103	97	101
Total	20	34	66	75	103	97	101
General Business Administration							
Bachelor's	2	7	8	19	21	24	20
Master's							
Total	2	7	8	19	21	21	20
International Business Management							
Bachelor's		4	10	10	8	10	14
Master's							
Total		4	10	10	8	10	14
Management							
Bachelor's	52	77	49	55	59	73	67
Master's							
Total	52	77	49	55	59	73	67
Marketing							
Bachelor's	8	14	7	7	16	19	15
Master's							
Total	8	14	7	7	16	19	15

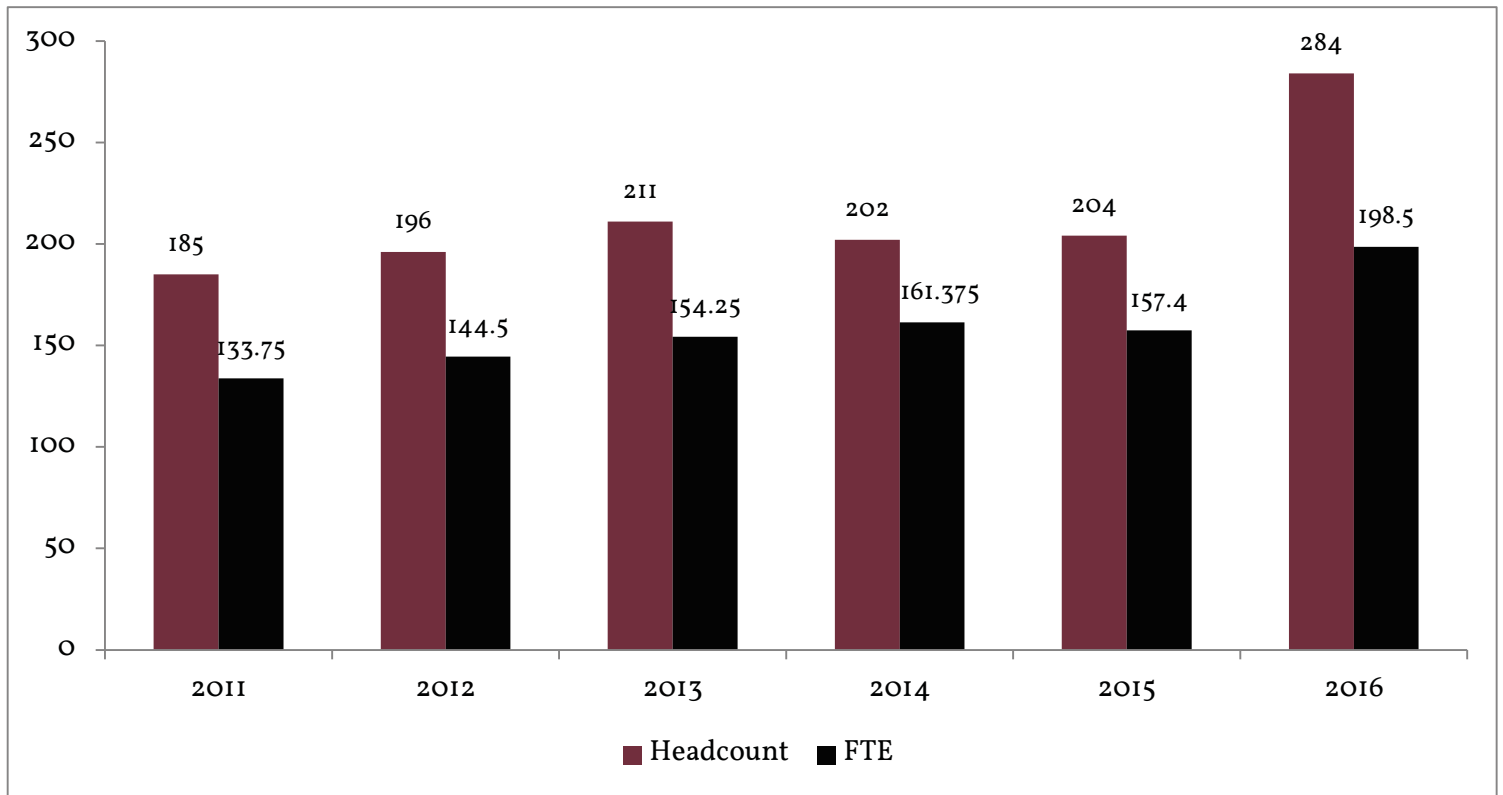
## Degrees Conferred by College, Department, Major, & Level (con't.)

	2009-10	2010-11	2011-12	2012-13	2013-14	2014-15	2015-16
<b>Education &amp; Human Development</b>							
Counseling, Healthy, & Kinesiology							
Counseling and Guidance							
Bachelor's							
Master's	47	64	74	78	100	93	76
Total	47	64	74	78	100	93	76
Kinesiology							
Bachelor's	23	38	30	32	31	38	52
Master's		2	3	5	5	5	1
Total	23	40	33	37	36	43	53
Educator & Leadership Preparation							
Bilingual Education							
Bachelor's							
Master's	14	20	11	11	10	9	10
Total	14	20	11	11	10	9	10
Early Childhood							
Bachelor's							
Master's	12	7	15	9	18	19	10
Total	12	7	15	9	18	19	10
Educational Administration							
Bachelor's							
Master's	13	37	36	30	40	35	25
Total	13	37	36	30	40	35	25
Interdisciplinary Studies							
Bachelor's	157	185	182	240	244	226	198
Master's							
Total	157	185	182	240	244	226	198
Reading Specialization							
Bachelor's							
Master's	8	5	7	12	6	5	9
Total	8	5	7	12	6	5	9
Special Education							
Bachelor's							
Master's	18	16	16	14	13	19	29
Total	18	16	16	14	13	19	29
<b>Total</b>							
Bachelor's	496	620	647	797	833	1,005	1,040
Master's	132	187	241	250	319	311	279
Total	628	807	888	1,047	1,152	1,316	1,319

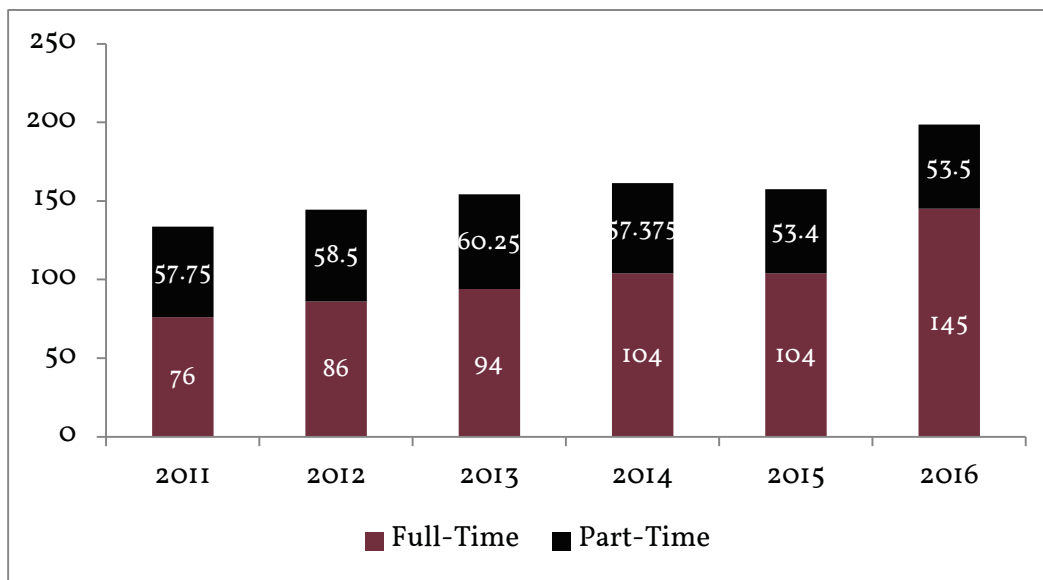


# Faculty and Staff

**A&M-SA Faculty, Fall 2012 - 2016<sup>23</sup>**

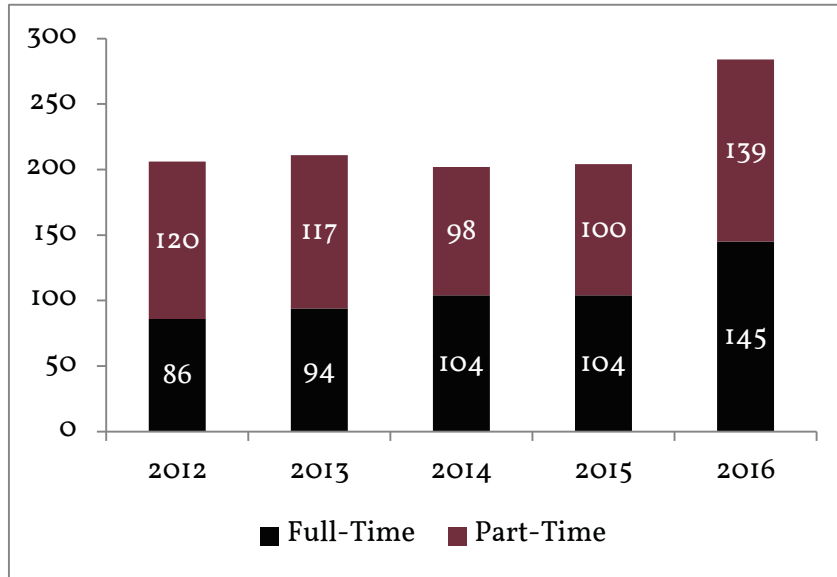


**Faculty FTE (Full-Time Equivalent), Fall 2012 - 2016**

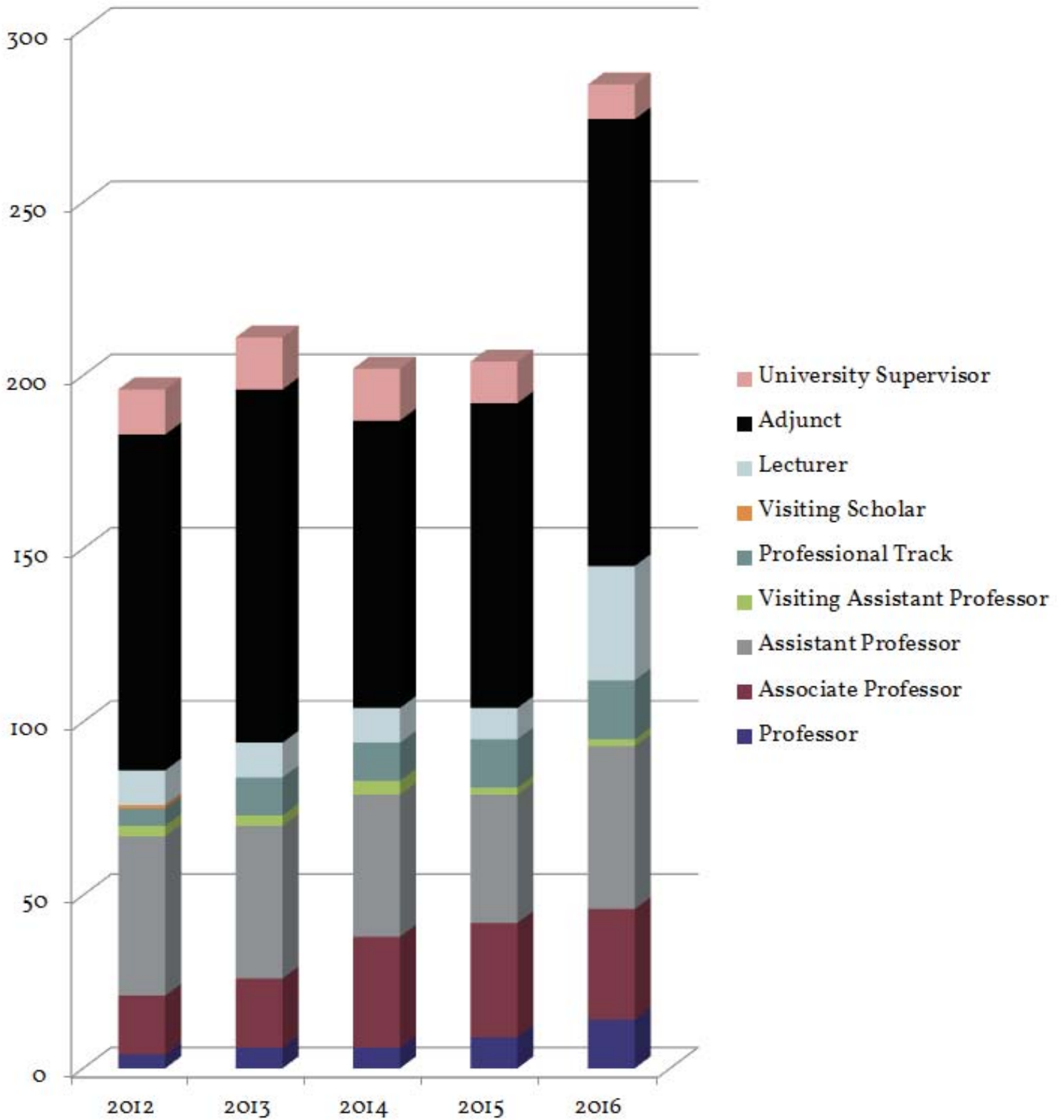


<sup>23</sup> Source: CBM004 and Office of the Provost

### Faculty Headcount, Fall 2012 - 2016<sup>24</sup>



## Faculty Headcount by Rank, Fall 2012 - 2016<sup>25</sup>



25 Source: Office of the Provost

## Detailed Composition of Faculty, Fall 2012- 2016<sup>26</sup>

	2012		2013		2014		2015		2016	
	#	%	#	%	#	%	#	%	#	%
<b>College</b>										
Arts & Sciences	71	36.2%								
Arts & Humanities									36	12.7%
<i>Humanities &amp; Social Sciences</i>			44	20.9%	43	21.3%	44	21.6%		
Science & Mathematics			25	11.8%	22	10.9%	22	10.8%	34	11.8%
Social Sciences									29	10.2%
Business	48	24.5%	48	22.7%						
<i>Accounting, Computing, &amp; Finance</i>					22	10.9%	22	10.8%		
Accounting & Finance									17	6.0%
Computing & Cyber Security									12	4.2%
Management & Marketing					23	11.4%	25	12.3%	31	10.9%
Education & Human Development										
Counseling, Health, & Kinesiology					22	10.9%	23	11.3%	29	10.2%
<i>Curriculum &amp; Kinesiology</i>	51	26.0%	64	30.3%						
Educator & Leadership Preparation					70	34.7%	68	33.3%	78	27.5%
<i>Leadership &amp; Counseling</i>	26	13.3%	30	14.2%						
University College										
University College									18	6.3%
<b>Ethnicity</b>										
Hispanic or Latino origin	56	28.6%	52	24.6%	44	21.8%	49	24.0%	67	23.6%
Not Hispanic or Latino origin	115	58.7%	152	72.0%	150	74.3%	146	71.6%	181	63.7%
Not reported	25	12.8%	7	3.3%	8	4.0%	9	4.4%	36	12.7%
<b>Race</b>										
American Indian or Alaskan Native			1	0.5%		0.0%		0.0%		0.0%
Asian	5	2.6%	11	5.2%	10	5.0%	16	7.8%	20	7.0%
Black or African-American	3	1.5%	9	4.3%	7	3.5%	7	3.4%	12	4.2%
International			1	0.5%	2	1.0%	1	0.5%	5	1.8%
Unknown	114	58.2%	59	28.0%	52	25.7%	58	28.4%	32	11.3%
White	74	37.8%	130	61.6%	131	64.9%	122	59.8%	156	54.9%
<b>Gender</b>										
Female	107	54.6%	113	53.6%	110	54.5%	109	53.4%	156	54.9%
Male	89	45.4%	98	46.4%	92	45.5%	95	46.6%	125	44.0%
Not Reported									3	1.1%



## Detailed Composition of Faculty, Fall 2012-2016 (con't.)

	2012		2013		2014		2015		2016	
	#	%	#	%	#	%	#	%	#	%
<b>Tenure Status</b>										
Tenured	20	10.2%	26	12.3%	38	18.8%	42	20.6%	46	16.2%
Tenure Track	48	24.5%	44	20.9%	41	20.3%	37	18.1%	47	16.5%
Non-Tenured	128	65.3%	141	66.8%	123	60.9%	125	61.3%	191	67.3%
<b>Rank</b>										
Professor	4	2.0%	6	2.8%	6	3.0%	9	4.4%	14	4.9%
Associate Professor	17	8.7%	20	9.5%	32	15.8%	33	16.2%	32	11.3%
Assistant Professor	46	23.5%	44	20.9%	41	20.3%	37	18.1%	47	16.5%
Visiting Assistant Professor	3	1.5%	3	1.4%	4	2.0%	2	1.0%	2	0.7%
Professional Track	5	2.6%	11	5.2%	11	5.4%	14	6.9%	17	5.9%
Visiting Scholar	1	0.5%								
Lecturer	10	5.1%	10	4.7%	10	5.0%	9	4.4%	33	11.6%
Adjunct	97	49.5%	102	48.3%	83	41.1%	88	43.1%	129	45.4%
University Supervisor	13	6.6%	15	7.1%	15	7.4%	12	5.9%	10	3.5%
<b>Total</b>	<b>196</b>		<b>211</b>		<b>202</b>		<b>204</b>		<b>284</b>	

## Detailed Composition of Full-Time Faculty, Fall 2016<sup>27</sup>

	#	%
<b>College &amp; Department</b>		
Arts & Sciences		
Arts & Humanities	25	17.2%
Science & Mathematics	23	15.9%
Social Sciences	15	10.3%
Business		
Accounting & Finance	10	6.9%
Computing & Cyber Security	8	5.5%
Management & Marketing	18	12.4%
Education & Human Development		
Counseling, Health, & Kinesiology	14	9.7%
Educator & Leadership Preparation	32	22.1%
<b>Ethnicity</b>		
Hispanic or Latino origin	37	25.5%
Not Hispanic or Latino origin	101	69.7%
Not reported	7	4.8%
<b>Race</b>		
American Indian or Alaskan Native		
Asian	15	10.30%
Black or African-American	7	4.80%
International	2	1.40%
Unknown	5	3.40%
White	86	59.30%
<b>Gender</b>		
Female	75	51.7%
Male	70	48.3%
<b>Tenure Status</b>		
Tenured	46	31.7%
Tenure Track	47	32.4%
Non-Tenured	52	35.9%
<b>Total</b>	<b>145</b>	

## Detailed Composition of Part-Time Faculty, Fall 2016<sup>28</sup>

	#	%
<b>College &amp; Department</b>		
<b>Arts &amp; Sciences</b>		
Arts & Humanities	11	7.9%
Science & Mathematics	11	7.9%
Social Sciences	14	10.1%
<b>Business</b>		
Accounting & Finance	7	5.0%
Computing & Cyber Security	4	2.9%
Management & Marketing	13	9.4%
<b>Education &amp; Human Development</b>		
Counseling, Health, & Kinesiology	15	10.8%
Educator & Leadership Preparation	46	33.1%
<b>University College</b>		
University College	18	12.9%
<b>Ethnicity</b>		
Hispanic or Latino origin	30	21.6%
Not Hispanic or Latino origin	80	57.6%
Not reported	29	20.9%
<b>Race</b>		
American Indian or Alaskan Native		
Asian	5	3.6%
Black or African-American	5	3.6%
International	3	2.2%
Unknown	27	19.4%
White	70	50.4%
<b>Gender</b>		
Female	81	58.3%
Male	55	39.6%
Not Reported	3	2.1%
<b>Total</b>	<b>139</b>	

## Staff

### Detailed Composition of Staff, Fall 2012 - 2016<sup>29</sup>

	2012		2013		2014		2015		2016	
	#	%	#	%	#	%	#	%	#	%
<b>Classification</b>										
Clerical	24	18.9%	28	16.1%	37	18.6%	30	15.2%	42	17.1%
Executive/Admin/Mgr	24	18.9%	38	21.8%	46	23.1%	41	20.7%	47	19.2%
Professional Non-Faculty	45	35.4%	74	42.5%	81	40.7%	101	51.0%	121	49.4%
Service/Maintenance	15	11.8%	15	8.6%	14	7.0%	12	6.1%	19	7.8%
Skilled Craft	3	2.4%								0.0%
Technical/Paraprof.	16	12.6%	19	10.9%	21	10.6%	14	7.0%	16	6.5%
<b>Race/Ethnicity</b>										
American Indian or Alaskan Native	1	0.8%	1	0.6%	1	0.5%				0.0%
Asian	2	1.6%	4	2.3%	4	2.0%	4	2.0%	6	2.4%
Black or African-American	7	5.5%	5	2.9%	8	4.0%	7	3.5%	12	4.9%
Hawaiian or Other Pacific Islander									1	0.4%
Hispanic	77	60.6%	111	63.8%	125	62.8%	116	58.7%	143	58.4%
Two or more races	1	0.8%	1	0.6%					1	0.4%
Unknown	2	1.6%	1	0.6%	1	0.5%	2	1.0%	2	0.8%
White	37	29.1%	51	29.3%	60	30.2%	69	34.8%	80	32.7%
<b>Gender</b>										
Female	78	61.4%	106	60.9%	126	63.3%	133	67.2%	166	67.8%
Male	49	38.6%	68	39.1%	73	36.7%	65	32.8%	79	32.2%
<b>Total</b>	<b>127</b>		<b>174</b>		<b>199</b>		<b>198</b>		<b>245</b>	