



TEXAS A&M UNIVERSITY  
SAN ANTONIO

# Space to be Vacated

Douglas Abraham VisSpiro Strategies



# Projects Creating Vacant Space

## Campus-Wide



TEXAS A&M UNIVERSITY  
SAN ANTONIO

- AAB-II (Col of Bus. & Library Bldg) opens Fall of 2022
  - Library vacates the CAB 2nd floor
  - College of Business vacates CAB 4th floor
- The Recreation Center opens Summer of 2024
  - Fitness Center vacates 1st floor of Madla





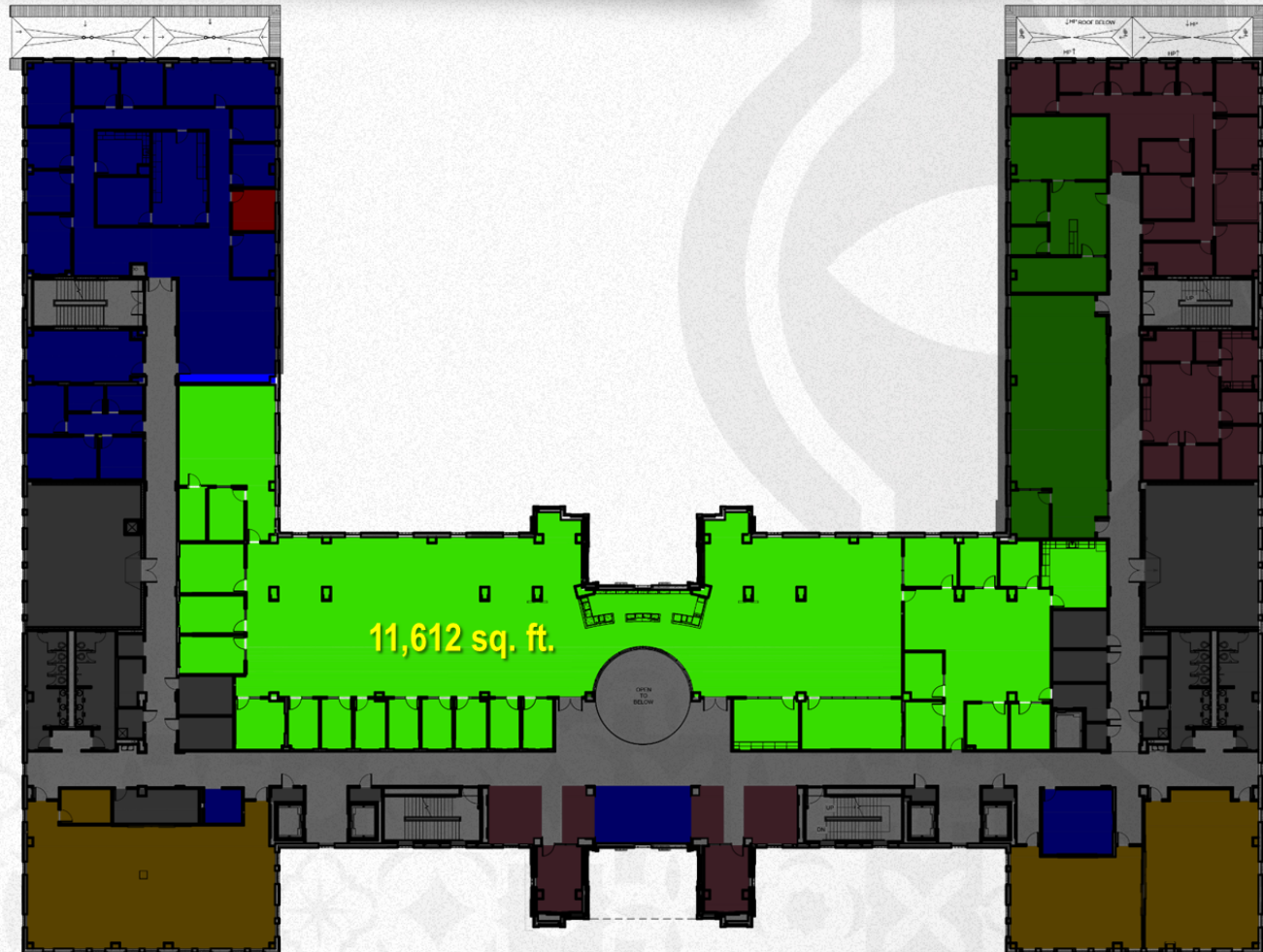
# AAB-II Moves

## Existing Library Space



TEXAS A&M UNIVERSITY  
SAN ANTONIO

- Existing library occupies 11,612 square feet, including interior circulation and walls, on the second floor of CAB
- Existing library houses:
  - Circulation desk
  - Stacks
  - Special collections
  - Study rooms
  - Computer stations
  - Lounge study seating
  - Administrative suite





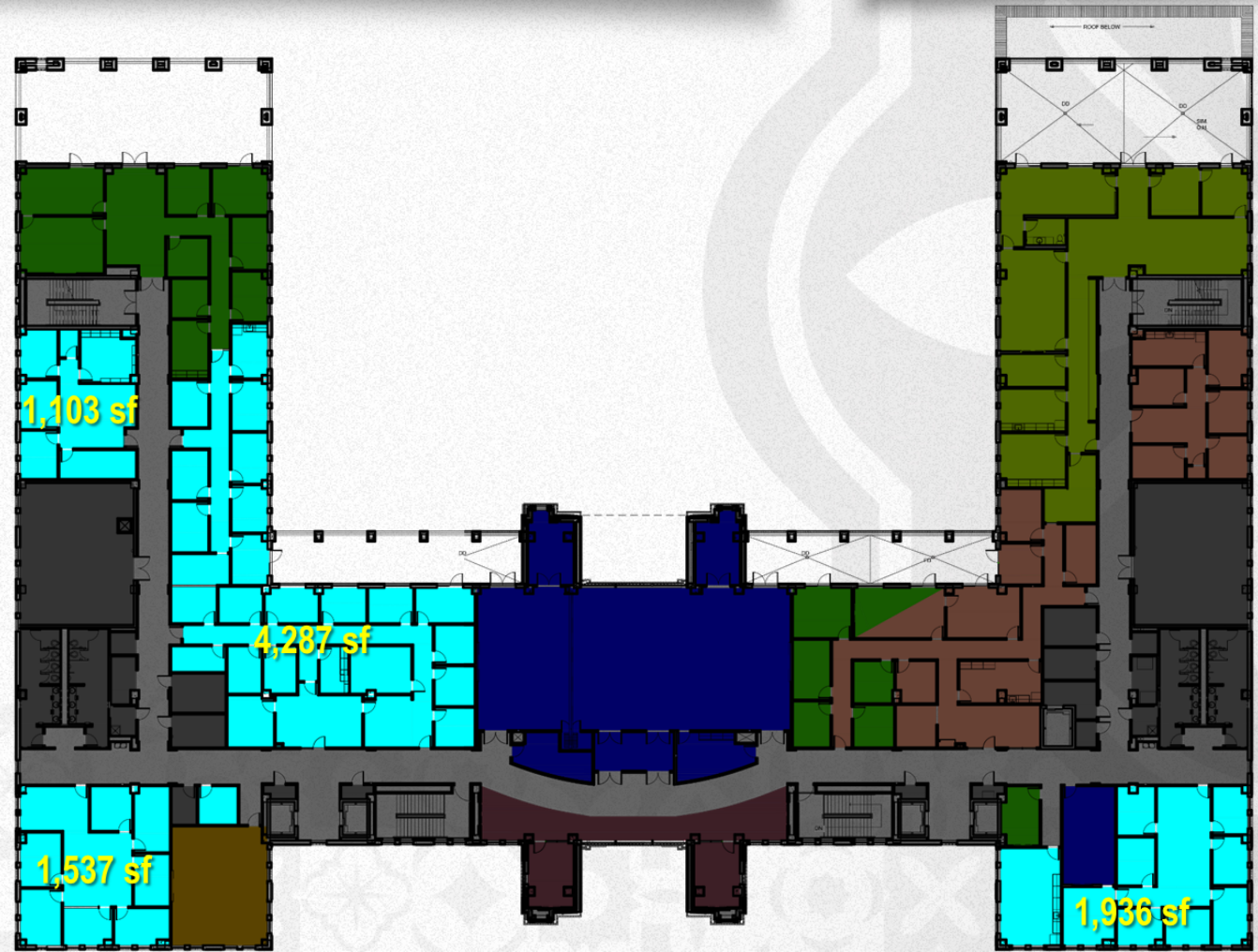
# AAB-II Moves

## Existing CoB Space



TEXAS A&M UNIVERSITY  
SAN ANTONIO

- Existing CoB occupies 8,863 square feet, including interior circulation and walls, on the fourth floor of CAB





# Summary

## Space Moving out of CAB and into AAB-II



TEXAS A&M UNIVERSITY  
SAN ANTONIO

- College of Business
  - 41 offices
  - 8,863 square feet
- Library
  - 7 offices
  - 16 student rooms
  - 11,612 square feet
- 20,475 total square feet will vacate CAB to AAB-II



# **“Tier I” Goals**

## **Vacate Modular C and the Portables**



TEXAS A&M UNIVERSITY  
**SAN ANTONIO**



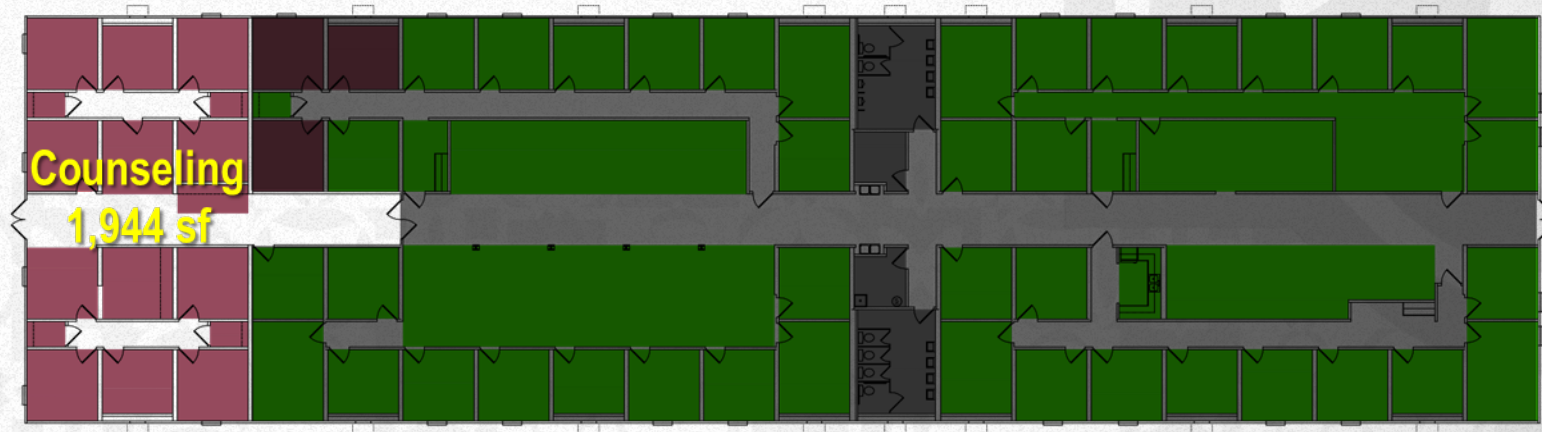
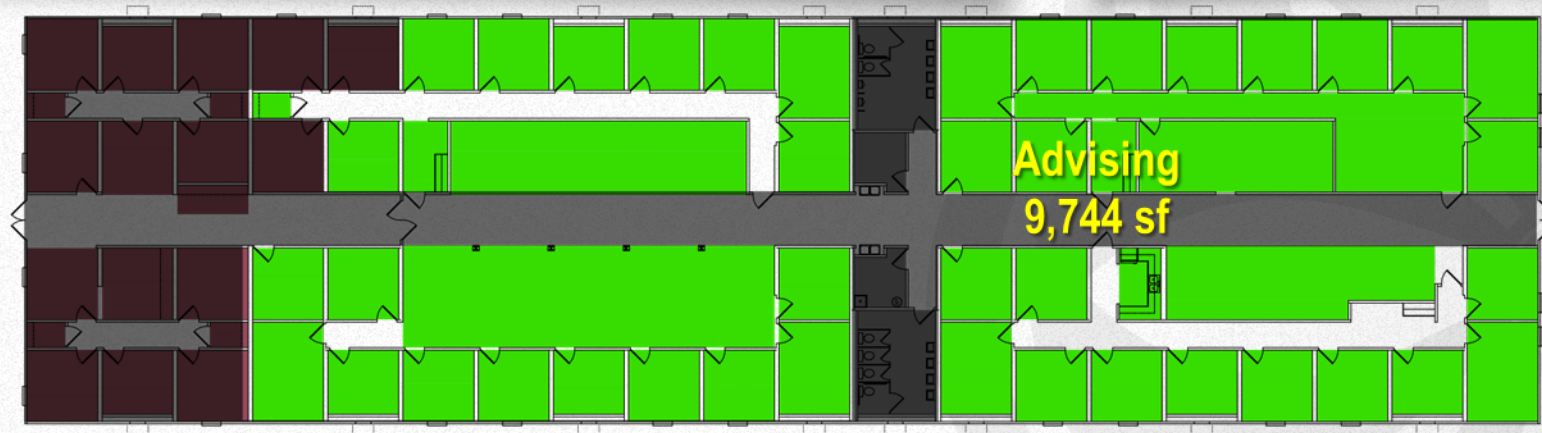
# Advising and Counseling

## Modular C



TEXAS A&M UNIVERSITY  
SAN ANTONIO

- Advising occupies 9,744 square feet
  - 38 offices
  - Needs an easily accessible location
- Counseling occupies 1,944 square feet
  - 10 offices
  - Needs an easily findable location but not very public (semi-private)
  - Madla Building would be “ideal” per users





# Business Affairs

## Multiple Portable Buildings



TEXAS A&M UNIVERSITY  
SAN ANTONIO

- Business Affairs occupies several portable buildings but not all are “staffed”
- 9,210 total square feet
- Rec Sports 1,378 sf
- Athletics 1,433 sf

